



MOLONGLO VALLEY
Community Forum

21 | March
2024

**Public
Meeting**

MEETING AGENDA

Molonglo Valley District Library

Elisabeth Judd, Director, Judd Studio

Peta Harding, Acting Executive Branch Manager, Libraries ACT



**MOLONGLO VALLEY
Community Forum**

Molonglo Development Update

Simon Tennent, Molonglo Development Director, Suburban Land Agency

Forum Update

Ryan Hemsley, Convenor, MVCF

MLA Address

Opportunity for MLAs to address the community

Questions and Answers Session

MOLONGLO VALLEY
DISTRICT
LIBRARY



MOLONGLO VALLEY
Community Forum

Molonglo Valley Library and Community Centre

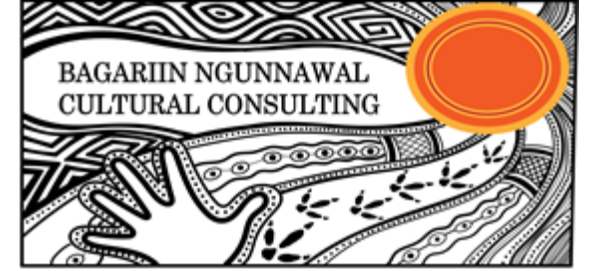
Presentation to the Molonglo Valley Community Forum

Functional brief and concept co-design

Thursday 21.03.24

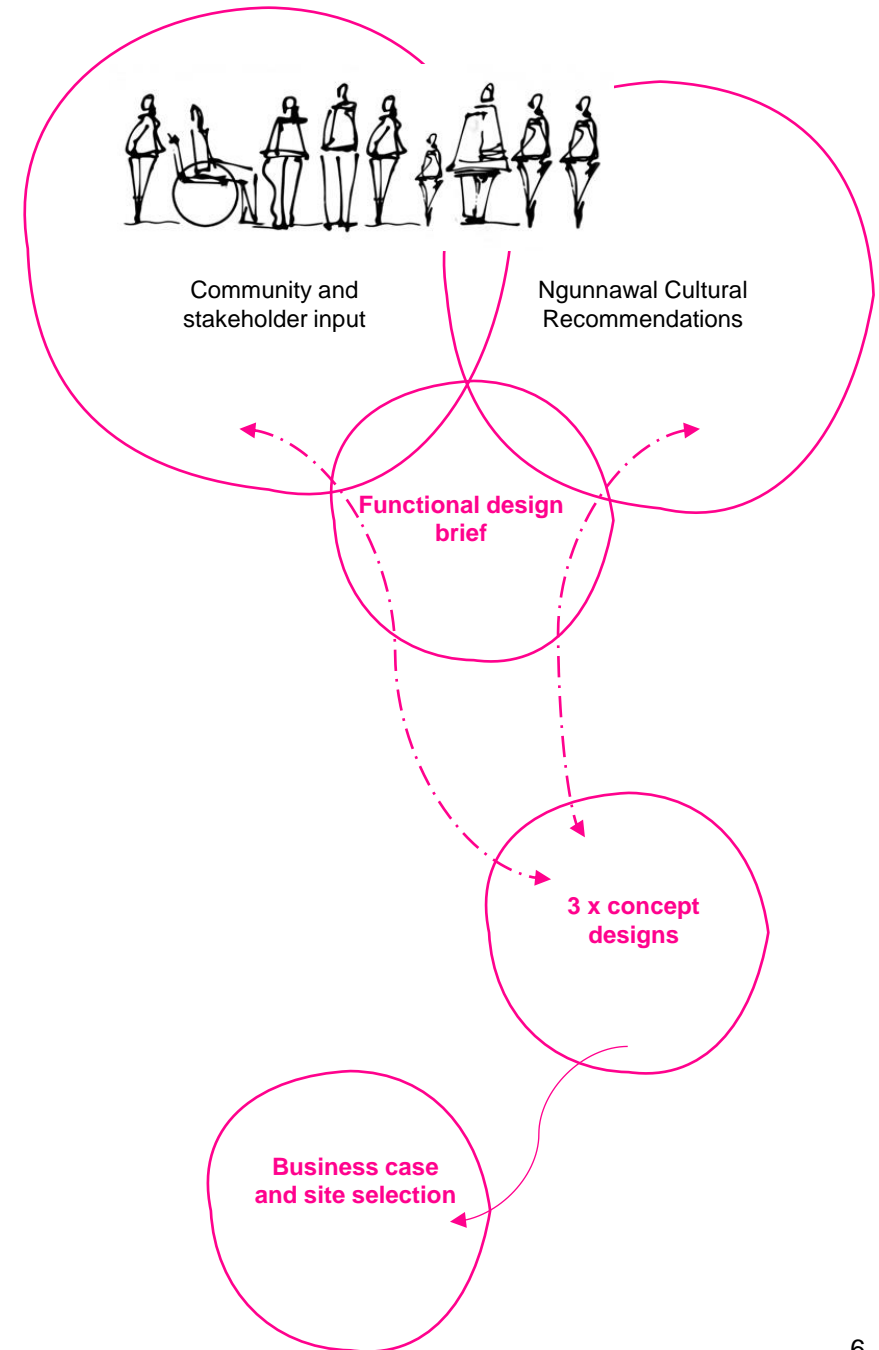
Introductions

Elisabeth Judd JUDD.studio architecture and urban design



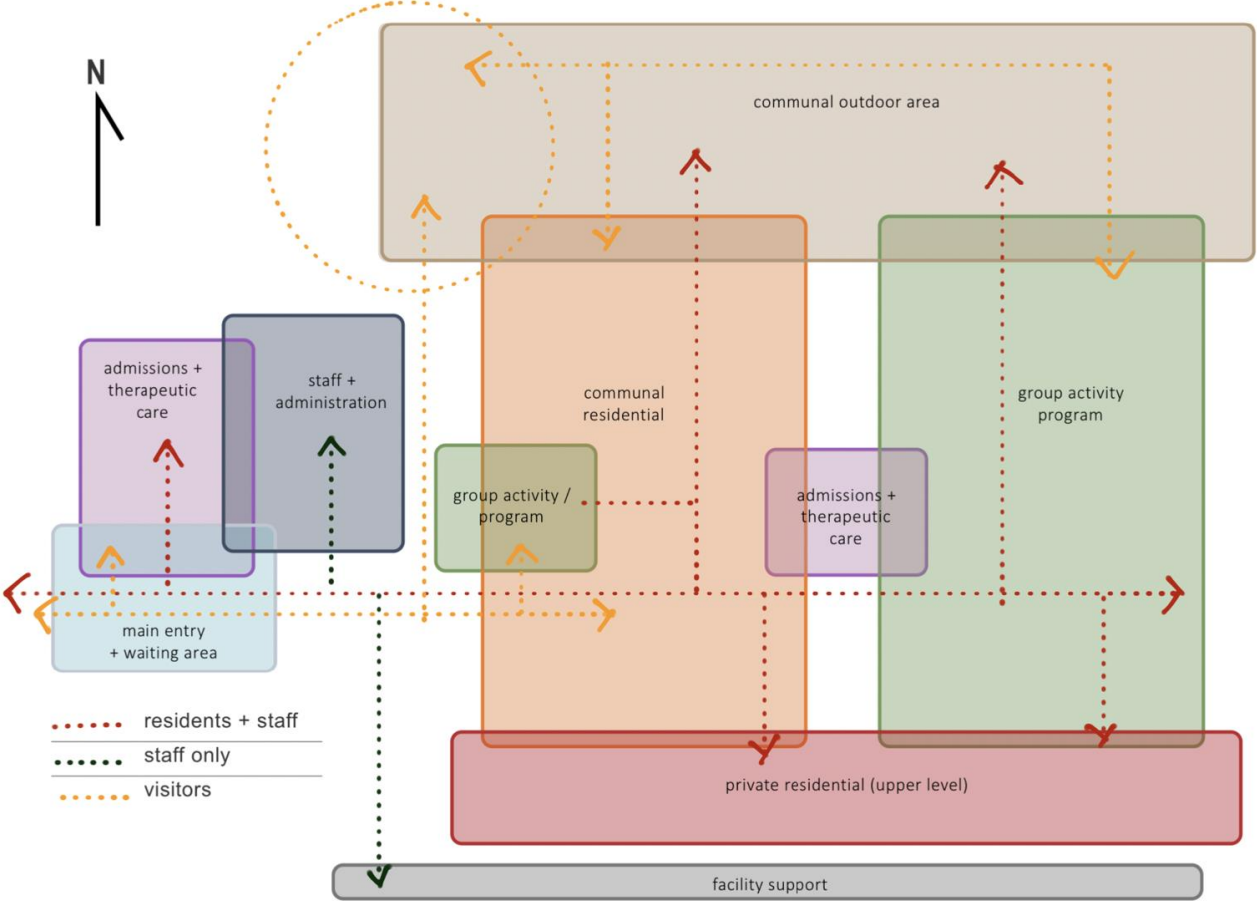
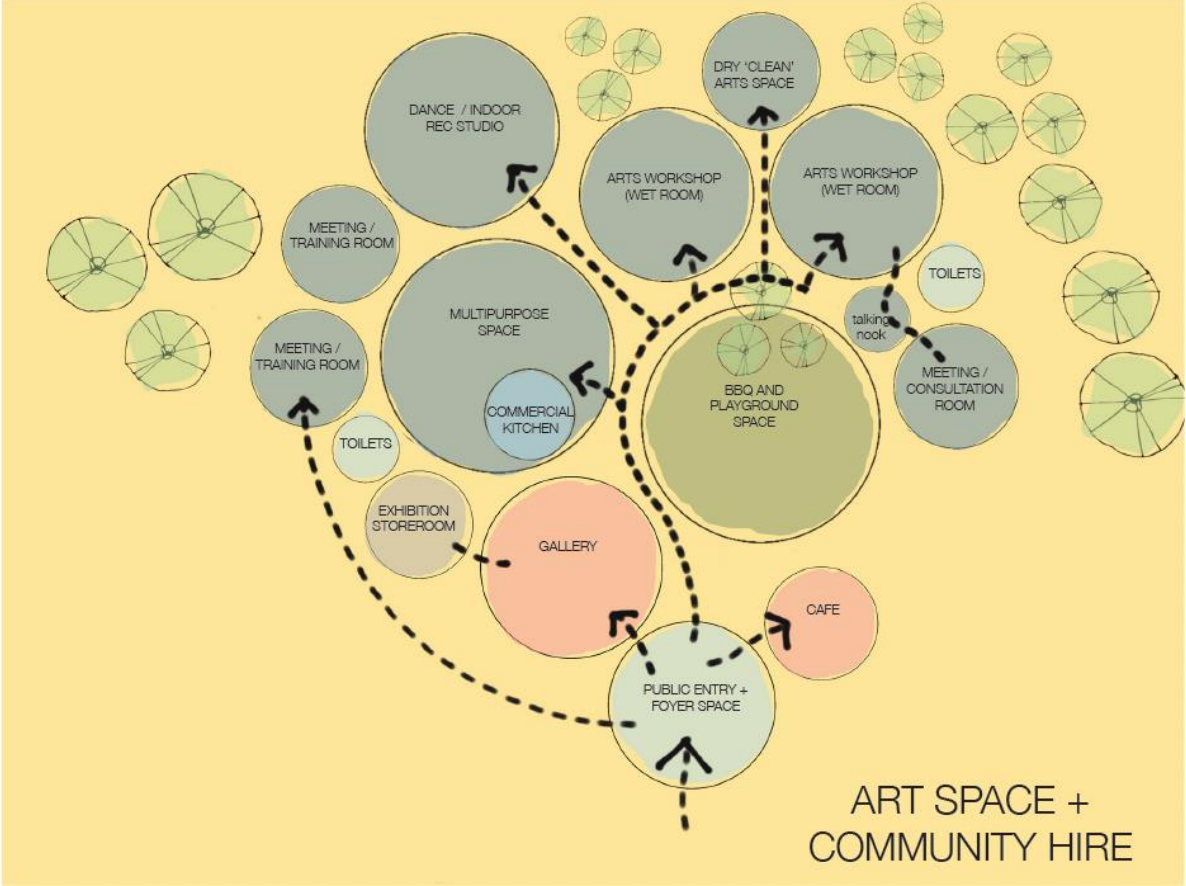
About the project

- A new library and community hub for the Molonglo Valley town centre.
- JUDD.studio has been engaged to:
 - Prepare **functional design brief**
 - **how** the buildings will be used + **who** will be using the facility
 - **what programs** / services will be offered
 - **what spaces** will be needed
 - resilient **best practice design**
 - **Aspirations – the ‘heart and soul’**
 - Vision
 - Architecture and landscape character
 - Cultural character



The functional design brief

- Functional relationships and journey mapping



The functional design brief

- Visioning, design character, operational and functional requirements (building, landscape and public realm)

FUNCTIONAL PLANNING AND SPATIAL RELATIONSHIPS

Based on the community needs assessment, stakeholder and community input and benchmark analysis, the following program areas are to be delivered as part of the new community centre for the Town Centre. Within the program areas, various spatial functional requirements will need to be delivered. Details of the program and functional areas are also outlined in the schedule of accommodation.

MAIN ENTRANCE		ART + MAKERS' HUB	
1.1	LOBBY	5.1	'WET' ARTS WORKSHOP SPACE
1.2	RECEPTION	5.2	'DRY' ARTS WORKSHOP SPACE
1.3	CAFE	5.3	ARTS WORKSHOP STORAGE
1.4	OUTDOOR WAITING AREA	5.4	DIGITAL ARTS HUB
1.5	PUBLIC AMENITIES	5.5	ARTS LOUNGE
		5.6	ANTEROOM
COMMUNITY EXHIBITION SPACE		COMMUNITY SUPPORT	
2.1	GALLERY	6.1	RECEPTION AND WAITING
2.2	EXHIBITION STORAGE	6.2	SHOWER AND LAUNDRY, WITH TOILET
YOUTH HUB		BUILDING MANAGEMENT + ADMINISTRATION	
3.1	DROP IN / HANG OUT RECREATION	6.3	CONSULT ROOM (SMALL)
3.2	COMMUNAL KITCHEN	6.4	CONSULT ROOM (MEDIUM)
3.3	MUSIC / DIGITAL RECORDING SPACE	6.5	TOILETS
3.4	AMENITIES (INCL SHOWER AND LAUNDRY)	7.1	RECEPTION
3.5	PRIVATE COUNSELLING	7.2	FACILITIES MANAGEMENT ADMIN AREA
3.6	QUIET / LOW SENSORY SPACE	7.3	COMMUNITY SECTOR SHARED WORKSPACE
3.7	STAFF ADMINISTRATION	7.4	STAFF ROOM
3.8	OUTDOOR RECREATION	7.5	TOILETS AND END OF TRIP FACILITIES
		7.6	SHARED ADMIN AMENITIES AND STORAGE
PUBLIC FUNCTION + HIRE		COMMUNITY WORKHUB	
4.1	MULTIPURPOSE / FUNCTION ROOM (LARGE)	8.1	WORKHUB AREA
4.2	MULTIPURPOSE ROOM (MEDIUM)	8.2	TOILETS
4.3	COMMERCIAL KITCHEN		
4.4	MEETING ROOM (MEDIUM)		
4.5	MEETING ROOM (SMALL)		
4.6	TOILETS AND END OF TRIP FACILITIES		
4.7	CARER'S ROOM (PARENT'S ROOM)		
4.8	ADULT CHANGING PLACE		

OUTDOOR ACTIVITY + PUBLIC REALM		FACILITY SUPPORT	
9.1	BBQ AND OUTDOOR EVENTS AREA	10.1	INDOOR ROOM SPECIFIC STORAGE
9.2	PLAYGROUND	10.2	CLEANER'S ROOM AND STORAGE
9.3	COMMUNITY RECREATION SPACE	10.3	COMMUNICATIONS ROOM
9.4	YARNING CIRCLE	10.4	DISPOSAL ROOM / WASTE
9.5	COMMUNITY GARDEN	10.5	SWITCH AND MECHANICAL
9.6	OUTDOOR ACTIVITIES STORAGE	10.6	LOADING DOCK
		10.7	CIRCULATION
VEHICLE ACCESS + PARKING			
11.1	STAFF PARKING		
11.2	COMMUNITY PARKING		
11.3	BICYCLE AND SCOOTER PARKING		
11.4	COMMUNITY VAN PARKING		
11.5	DROP OFF / SHORT STAY AREA		
11.6	EMERGENCY VEHICLE ACCESS		
11.7	WASTE COLLECTION ACCESS		

YOUTH HUB

HOURS OF OPERATION :
9 - 5.00PM
(+SPECIAL ACCESS FOR AFTER HOURS EVENTS)

ANTICIPATED USERS :
YOUNG PEOPLE IN THE GUNGAHLIN REGION INCLUDING PRIMARY AND HIGH SCHOOL AGE CHILDREN, AND YOUTH SUPPORT WORKERS. SPACES (INDOOR AND OUTDOOR) MIGHT ALSO BE USED FOR OUTREACH PROGRAMS OR MEETINGS WITH YOUNG PEOPLE.

3.1

DROP IN / HANG OUT / RECREATION / LOUNGE / KITCHEN AREA

A dedicated place for young people in the Gungahlin community. The hub will be open to for 'drop in' use, for youth focussed counselling and support services and for youth events. It will be a place where all young people in the community can visit and feel welcome, comfortable and safe – a place that they can call their own. The hub will offer a communal 'hang out' area with a kitchen, lounge space and dining area, free shower and laundry facilities (that will support the needs of vulnerable youth or families sleeping rough), a quiet 'chill out' space, and space for confidential counselling.

A central welcoming space for young people to walk in, find help if they need it, and socialise, primarily during the day and also in the evening when the centre is open for specific events.

Space to accommodate around 50-100 young people for functions (can be accommodated inside and outside).

FUNCTIONAL REQUIREMENTS

- Space to accommodate informal lounge seating with large TV, indoor games (eg a pool or table tennis table), dining area, and small computer hub, with connection through to quiet area adjacent to main lounge (refer item 3.6).
- Communal kitchen (refer item 3.3) to relate directly to lounge / dining area.
- Room to be able to be divided to allow for smaller sessions as appropriate.
- All lounge areas to be visible from staff administrative area (to promote a safe environment)
- Where appropriate, space to accommodate a small stage / multiuse performance area (approx 10m²)
- Wall space should be provided for cultural and community expression through artwork or murals.

		AREAS
3.1	DROP IN / HANG OUT RECREATION	100m ²
3.2	COMMUNAL KITCHEN	18m ²
3.3	MUSIC / DIGITAL RECORDING SPACE	9m ²
3.4	AMENITIES (INCL SHOWER AND LAUNDRY)	30m ²
3.5	PRIVATE COUNSELLING	14m ²
3.6	QUIET / LOW SENSORY SPACE	9m ²
3.7	STAFF ADMINISTRATION	20m ²
3.8	OUTDOOR RECREATION	55m ²
TOTAL AREAS		200m²
(+55m² OUTDOOR RECREATION)		

DESIGN PRINCIPLES

- Main room should have a home-like atmosphere, promoting a sense of welcome and warmth. Furnishings and floor coverings should be soft where possible, but with a view to easy maintenance and cleaning.
- Wall colours should be warm and youthful (but with a mind to not being overwhelming for young people with sensory sensitivities).
- Includes abundant access to natural light and fresh air ventilation.
- Area to include storage units to house various activity equipment.
- Area to open out to secure and covered outside recreation / dining area for youth hub events or to enjoy the external landscape.

Planning for resilience future proofing



Dickson Library

(1969)

Canberra's first permanent public library

23 yrs

USB
flashdrives

19 yrs

Skype

Facebook

Google
maps

Youtube

16 yrs

iphone

Kindle

ipad

20 yrs

18 yrs

13 yrs

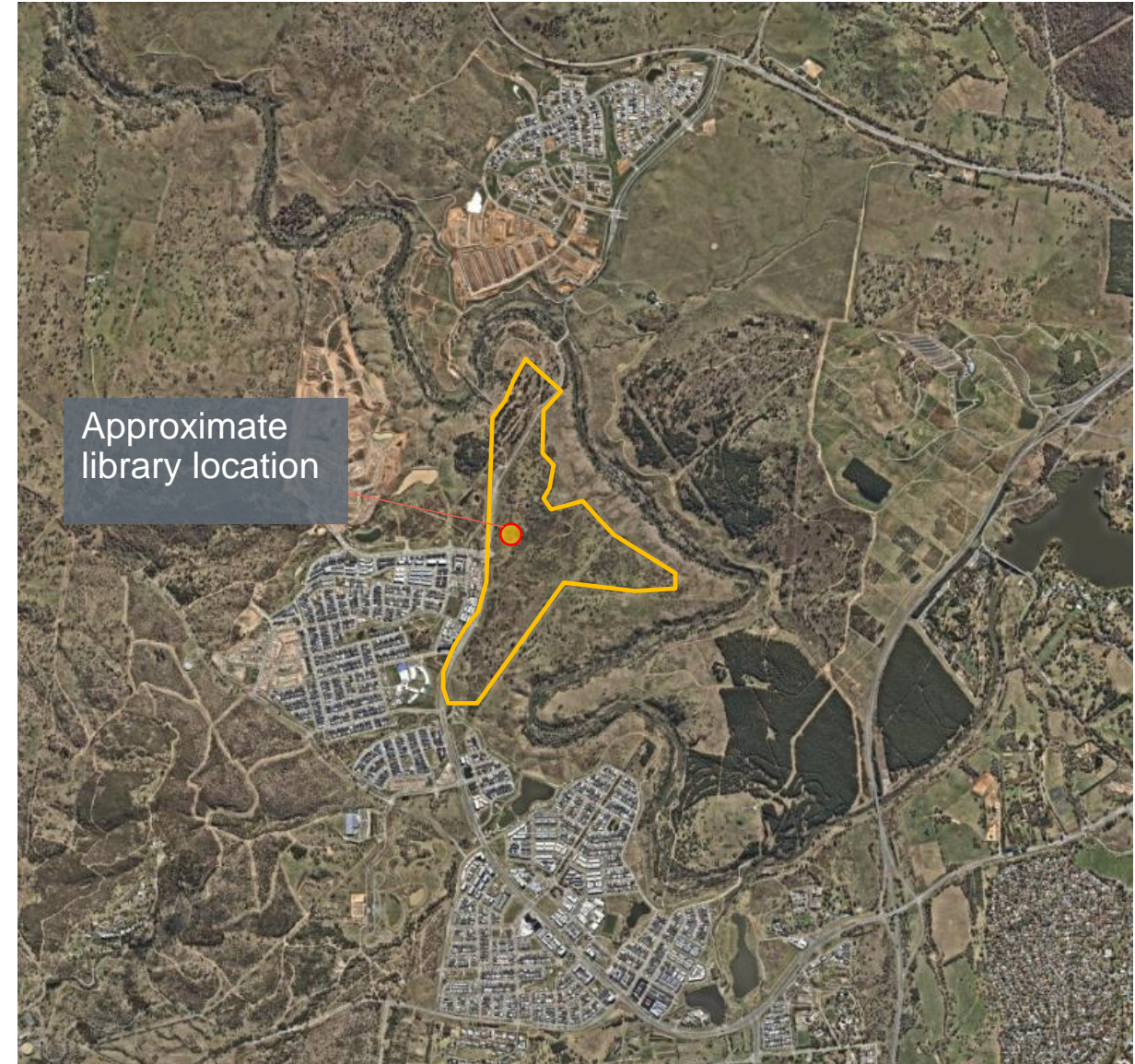
Planning for resilience

Libraries / community hubs as:

- Refuge from **extreme weather** (heat, cold, smoke)
- Safe place for our **vulnerable citizens** (showers, laundry, food)
- Welcoming place for our **elders and our youth**
- **Accessible and equitable** community resource

About 'the site'

- 4 stage land release over 8-10 years
- **Stage 2** Estate Development Plan (library / retail + commercial core)
- Nov 2024 - June 2026
- **Community engagement 2024**



About 'the site'



The co-design program engagement to concept

Phase 1

Phase 2

Step 3

- Desktop research
- Staff engagement
- Community presentations
- YourSay
- Group drop-ins
- 1 on 1 discussions
- Student and young people
- Library tours
- Community pop-ups

- Listening report
- Functional design brief

- Concept designs x 3
- Preferred concept design

Consider
'what we've
heard'

Phase 1 discovery and research (Jan - March)

Review Imagining 2030

Precedent review

Site analysis

Cultural context

Phase 1 engagement + co-design (March - May)

Library staff – working group and survey

Visitors and library users

Traditional Custodians

Molonglo community

Canberra public

Case studies

Woden Library refurbishment

Green Square Library & Plaza

Marrickville Library

PHIVE Parramatta Library

Liverpool Public Library (Yellamundie Library)

State Library of **Victoria**

Newcastle Digital Library

Warrnambool Library and Learning Centre

Surry Hills Library and Community Centre

Library at the Dock

Oslo Public Library (Deichman Library)

University of **Birmingham** Main Library

Dokk1 Aarhus Main Library, **Denmark**

Oodi Central Library in **Helsinki**, Finland

DLR Lexicon Library in **Dublin**, Ireland



Case studies

- 'Not just' about book collections
- Important spaces for **social connection**
- A place for people to **gather and share knowledge**
- **Embracing use of technology** and interactive learning
- Reduction in energy use / **ESD principles**
- Blurred boundaries between **indoor and outdoor** spaces
- Demonstration of local **indigenous culture**
- Embracing **multicultural** context
- **Flexible spaces** which adapt dependent on demand
- Range of **functionality across multiple levels**
- Open spaces to accommodate **various groups sizes**
- **Informal and formal learning** spaces
- inclusion of **public facilities** (cafes, theatre, exhibitions)
- **Active versus passive** uses / quiet versus 'noisy'
- **'Living room'** spaces
- **Accessible** to everyone
- Creates **new public space**

how to **get involved**

YourSay opening soon

- **Fill out a survey**
- **Leave a comment or post your ideas online**
- **Visit us at a pop up** (dates will be posted on YourSay)
- **Visit the library and leave your feedback**

Discussion and questions **your perspectives**

- ? **Key issues for Molonglo Valley residents**
- ? **Site considerations where are the opportunities and what are the challenges**
- ? **What facilities are you looking for**

Thank you

Questions?



MOLONGLO VALLEY
Community Forum

MOLONGLO DEVELOPMENT UPDATE



MOLONGLO VALLEY
Community Forum



ACT
Government

Suburban Land
Agency

Creating great places where communities thrive

2024 Molonglo Valley Community Forum

Current Status and Future Development Program

Simon Tennent, Molonglo Development Director, *SLA*

21 March 2024

We wish to acknowledge the Ngunnawal people as traditional custodians of the land we are meeting on and recognise any other people or families with connection to the lands of the ACT and region. We wish to acknowledge and respect their continuing culture and the contribution they make to the life of this city and this region. We would also like to acknowledge and welcome other Aboriginal and Torres Strait Islander people who may be attending today's event.

Today's agenda

1. Current Development Status

- 16,000 residents across 4 of 8 suburbs

2. Active Development Projects

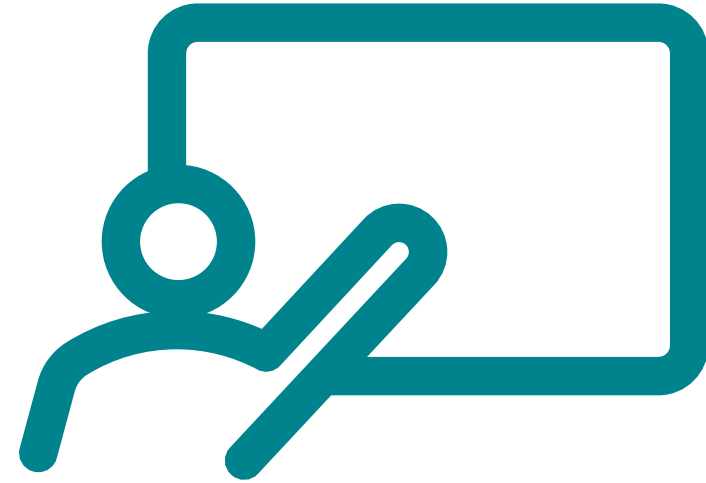
- Whitlam – The Final Stages
- Enabling Infrastructure Projects

3. Imminent Development Projects

- Deep Creek Dam
- Whitlam Local Centre
- Coombs and Wright Village
- Coombs Community Centre
- John Gorton Drive Intersections

4. Future Development Projects

- Molonglo Group Centre and Surrounds
- Molonglo 3 – The Final 3 Suburbs



Suburban Land Agency

- Statutory authority under the *City Renewal Authority and Suburban Land Agency Act 2017 (CRASLA Act)*.
- Report to Minister
- Independent Board (Seven people)
- The land outside the city renewal precinct, as governed by the Indicative Land Release Program (ILRP).
- On average enough land for 3,000 – 4,000 new dwellings per year.





**Creating great places
where communities thrive**

Current Development Status

Molonglo Valley

2004

Population: 0



Molonglo Valley

2014

Population: 1,383



Molonglo Valley

2023

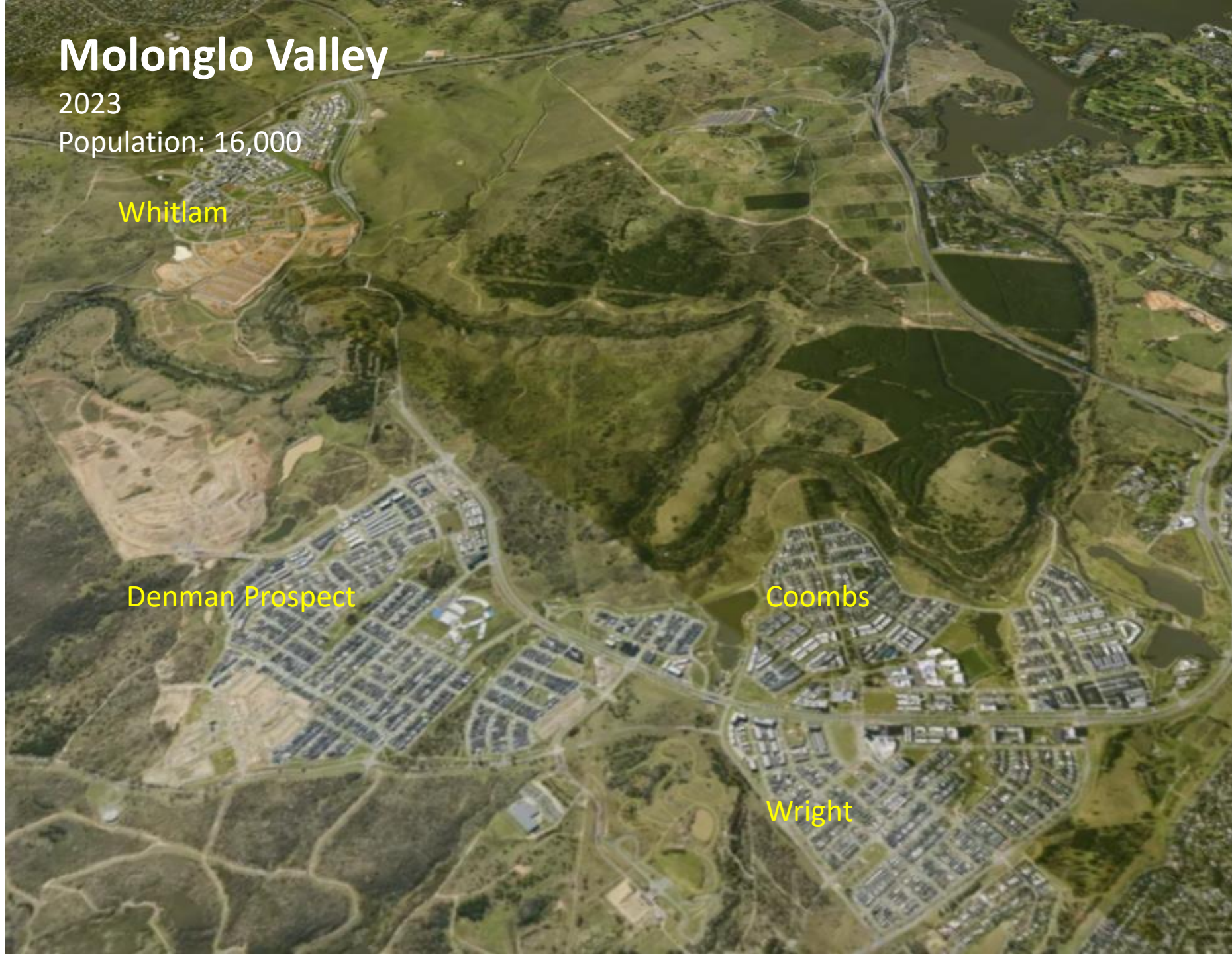
Population: 16,000

Whitlam

Denman Prospect

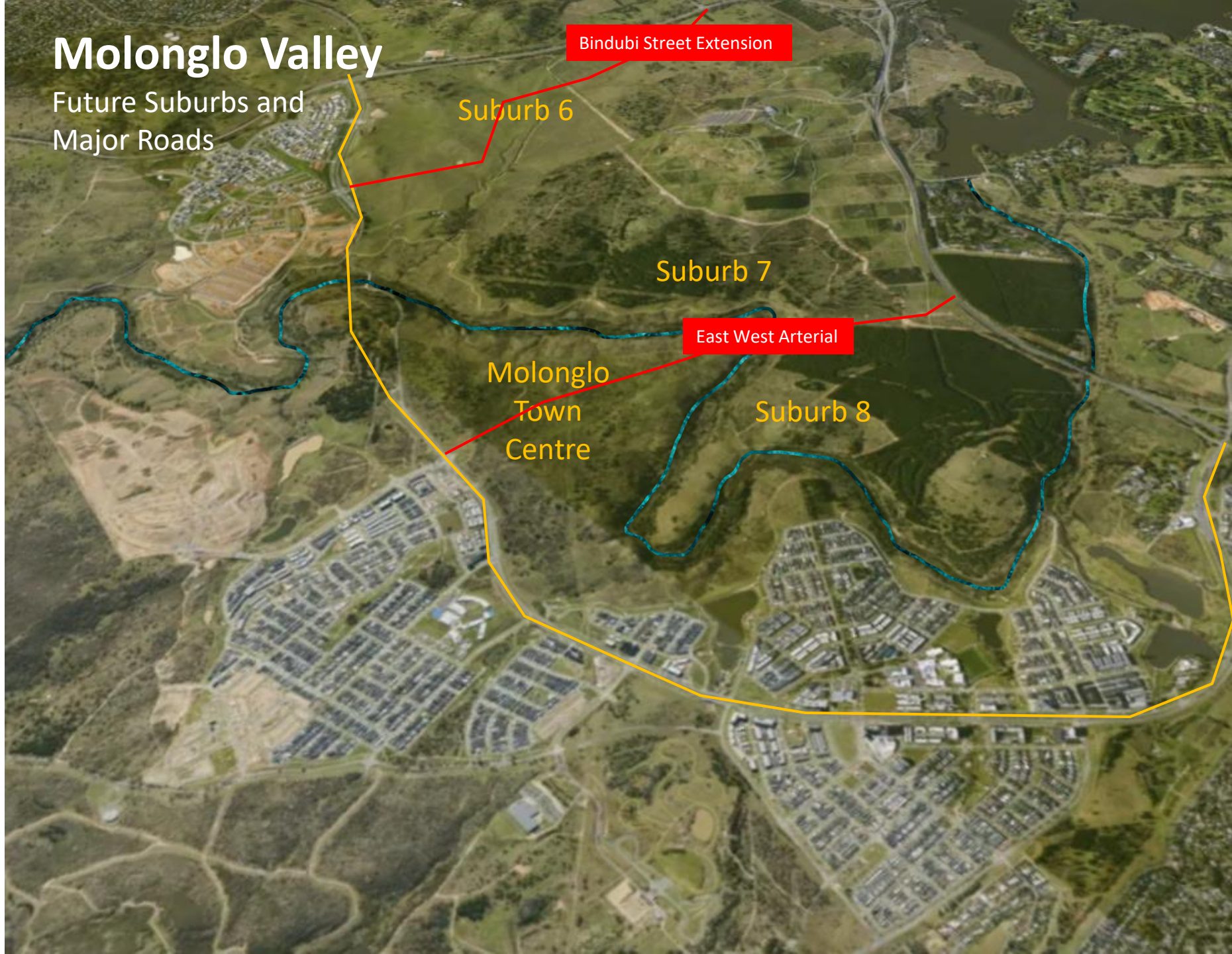
Coombs

Wright



Molonglo Valley

Future Suburbs and
Major Roads



Bindubi Street Extension

Suburb 6

Suburb 7

East West Arterial

Molonglo
Town
Centre

Suburb 8

Active Development Projects

Whitlam



Whitlam – The Final Stages

- Whitlam Local Centre DA Approval – 19 March 2024
- Whitlam Local Centre Sale Process – April to July 2024
- Deep Creek Dam Approval – June 2024
- Deep Creek Dam Construction – September 2024 to September 2026
- Stage 4A Construction – April 2024 to September 2025
- Stage 4B Construction – May 2026 to August 2027
- Stage 4 Sales Events – May 2024 and July 2025
- Whitlam School Opening – February 2026



132KV Powerline Relocation



Molonglo Valley Interceptor Sewer Upgrades



Imminent Development Projects

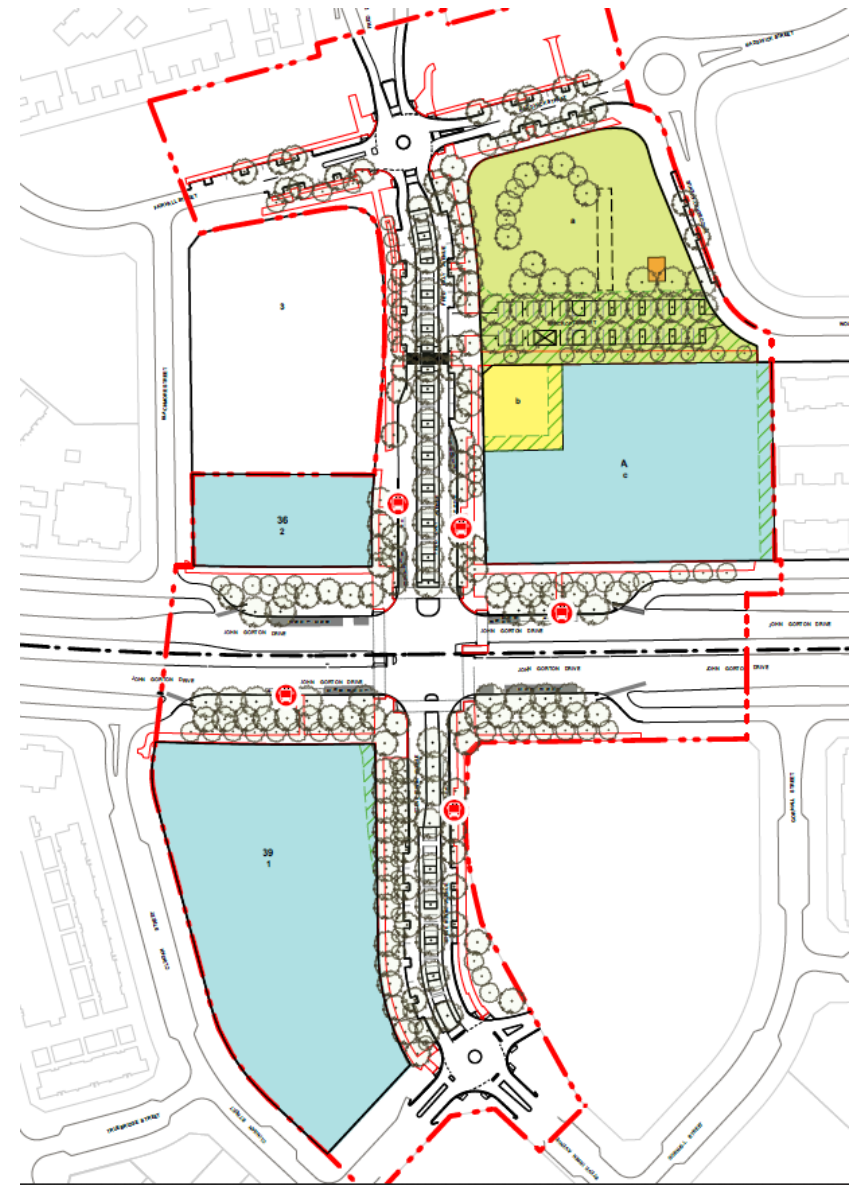
Whitlam's Deep Creek Dam



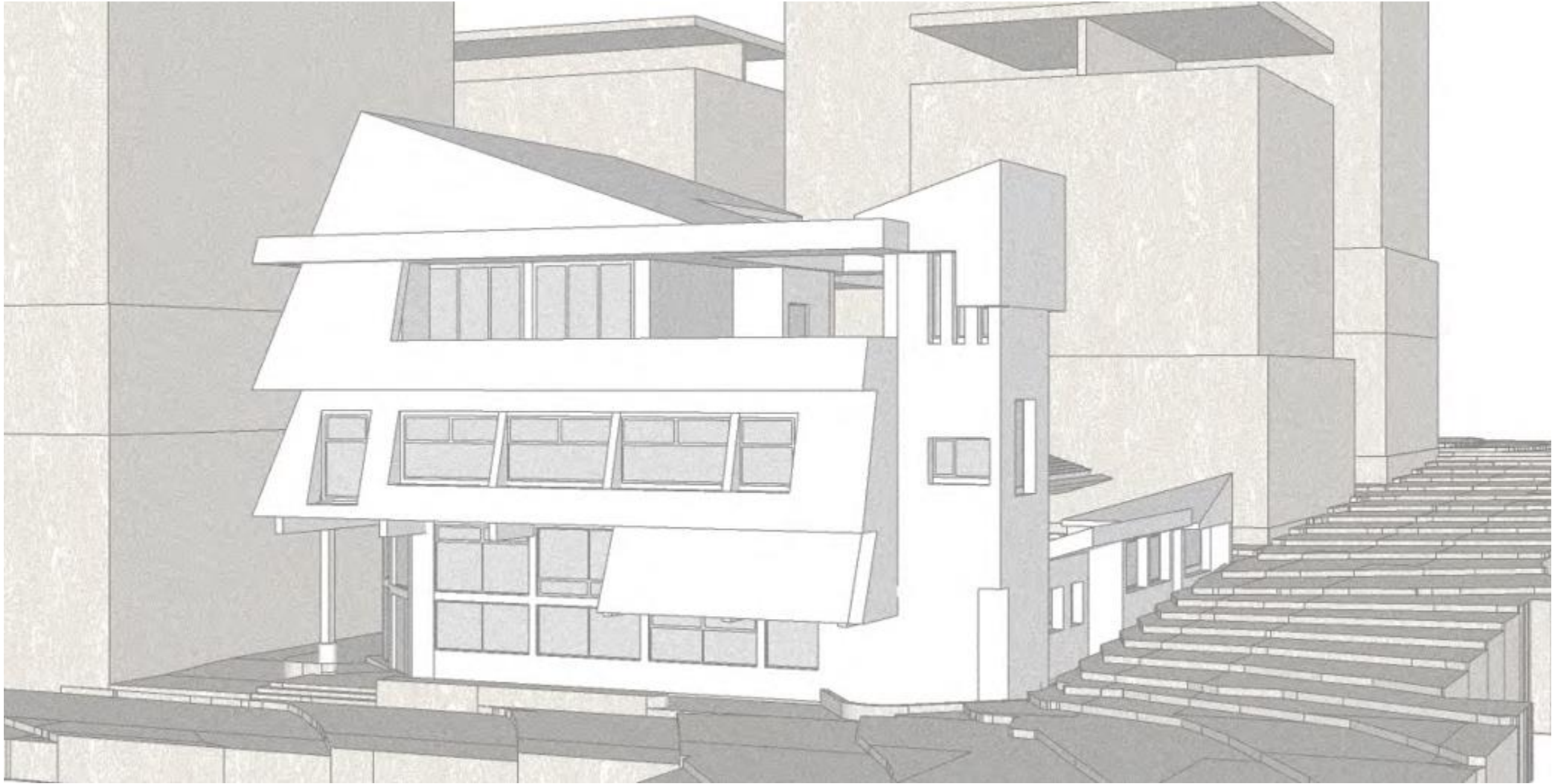
Whitlam Local Centre



Coombs and Wright Village



Coombs Community Centre



John Gorton Drive Intersections



Future Development Projects



Molonglo Group/Town Centre



Indicative Layout – Subject to change

Delivery Strategy



Early Works Package – John Gorton Drive Intersections

- Design and Approval – February 2022 to June 2024
- Construction – June 2024 to March 2025

Stage One

SDP 1

- RFT, Design and Approval – March 2024 to June 2025
- Land Release – June 2025 to June 2026
- Estate Construction (Civil and Landscape) – September 2025 to Feb 2027

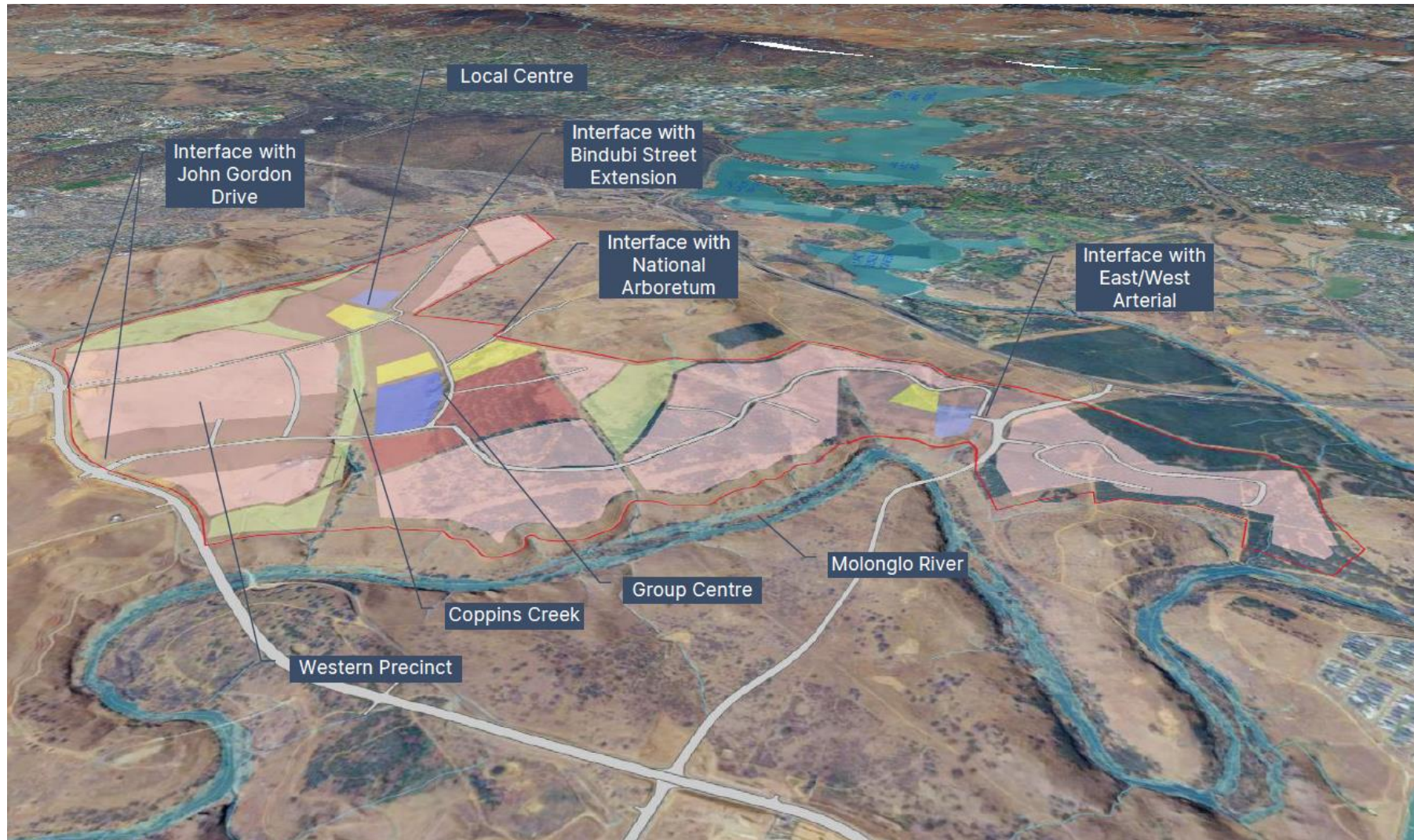
SDP 2

- RFT, Design and Approval – March 2024 to August 2026
- Land Release – April 2027 to June 2030
- Estate Construction (Civil and Landscape) – April 2027 to September 2028

Stage Two

- RFT, Design and Approval – January 2027 to December 2028
- Land Release – May 2029 to June 2033
- Estate Construction (Civil and Landscape) – May 2029 to February 2031

Molonglo 3 – The Final 3 Suburbs



Thank you

Creating great places where communities thrive



ACT
Government

Suburban Land
Agency

Questions?



MOLONGLO VALLEY
Community Forum



MOLOGLO VALLEY
Community Forum

UPDATE

MOLONGLO TOWN CENTRE



*“The ACT Government is now commencing work to develop a case to the National Capital Authority to **change the National Capital Plan and recognise Molonglo as a Town Centre.** Following this we will also develop a similar amendment to our own Territory Plan.”*

ACT Minister for Planning, Chris Steel MLA, 26 February 2024



**MOLONGLO VALLEY
Community Forum**

For more information, visit:

www.planning.act.gov.au/projects-priorities/investigations-to-transition-molonglo-group-centre-to-a-town-centre

MOLONGLO RIVER BRIDGE



- Construction now underway
- Completion due in December 2025

For more information, visit:

www.cityservices.act.gov.au/Infrastructure-Projects/woden-weston-creek-and-molonglo/bridge-over-molonglo-river



**MOLONGLO VALLEY
Community Forum**

COOMBS PENINSULA



*“I have also listened to the views of the community about Coombs Peninsula, and have sought advice about how this could be **incorporated in the Molonglo River Nature Reserve, or as public open space.**”*

**ACT Minister for Planning, Chris Steel
MLA, 28 February 2024**



**MOLONGLO VALLEY
Community Forum**

Questions?



MOLONGLO VALLEY
Community Forum

THANK YOU



MOLONGLO VALLEY
Community Forum