



MOLONGLO VALLEY
Community Forum

24 | August
2023

**Public
Meeting**

MEETING AGENDA

~~Molonglo Valley District Library~~

~~Vanessa Little, Executive Branch Manager, Libraries ACT~~

Molonglo River Pedestrian Bridges

Simon Tennent, Molonglo Development Director, Suburban Land Agency and Patrick Morgan, AECOM

The future of the Molonglo Valley Community Forum

Ryan Hemsley, Convenor, MVCF and Monique Brouwer, Co-Convenor, MVCF

Stromlo Forest Anglican College

Craig Dent, Associate Director, Colliers

MLA Address

Opportunity for MLAs to address the community

Questions and Answers Session



**MOLONGLO VALLEY
Community Forum**

MOLONGLO RIVER PEDESTRIAN BRIDGES



MOLONGLO VALLEY
Community Forum



Concept Planning for Three Active Travel Bridges over the Molonglo River

Molonglo Valley Community Forum

Acknowledgement of Country

AECOM acknowledges the Traditional Custodians of country throughout Australia. We pay respects to Elders both past and present and to emerging community leaders. We recognise and celebrate the diversity of Aboriginal and Torres Strait Islander people and their ongoing cultures and connections to the lands and waters.

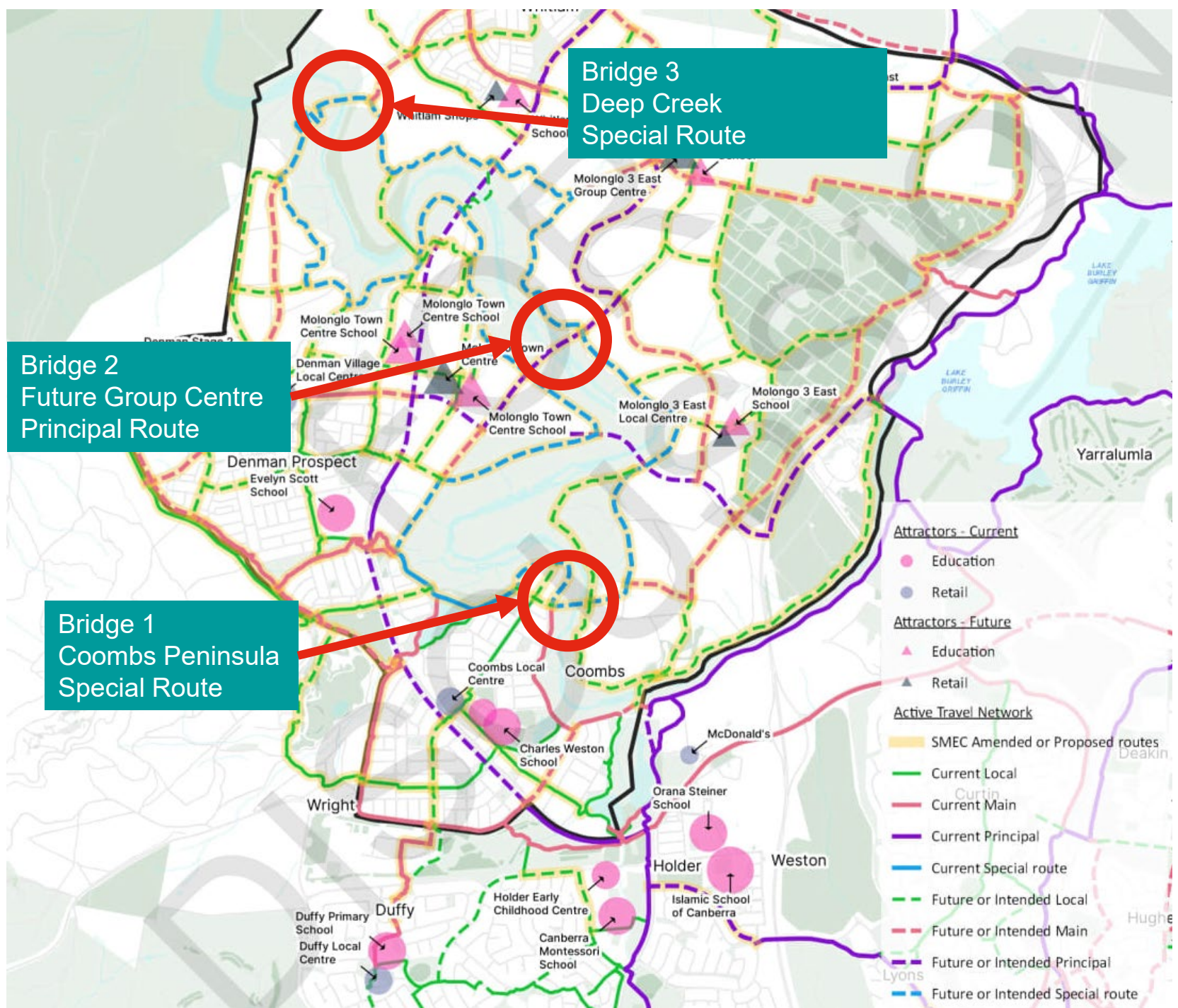
Note on Terminology

AECOM acknowledges the diversity of Aboriginal and Torres Strait Islander people, their communities and cultures. Throughout this document we refer to the Aboriginal and Torres Strait Islander Community as inclusive of the many different First Nations Peoples in Australia, including Aboriginal and Torres Strait Islander communities. The words Indigenous, First Nations and Aboriginal and Torres Strait Islander people are used interchangeably throughout this document.

Agenda

1. Opening
2. Project overview
3. Project summary – what have we done and where are we
4. Technical updates
5. Questions and feedback

The proposed sites



Opportunities



activate the growing region



support health and wellbeing



foster a connection with the environment



strengthen the community



improve access to facilities and attractors



reduce vehicle use and emissions

Project aims



attractive



flexible



accessible



inclusive



safe



legible



sustainable



integrated



future proofed

Draft Investigation and Concept Designs



site and network opportunities and constraints

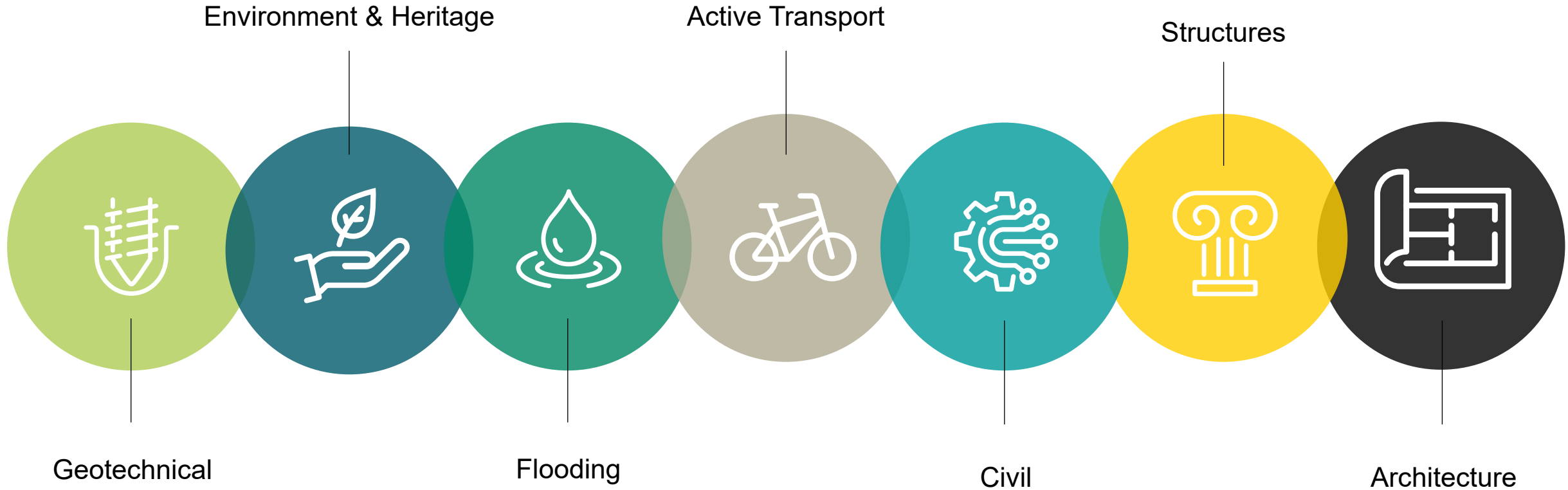


identified gaps of information that will need to be developed in future studies



concept design option packages that respond to opportunities and constraints

Technical inputs



Structures – design criteria



Bridge design life



Design loading



Flood immunity



Path width



Earthquake

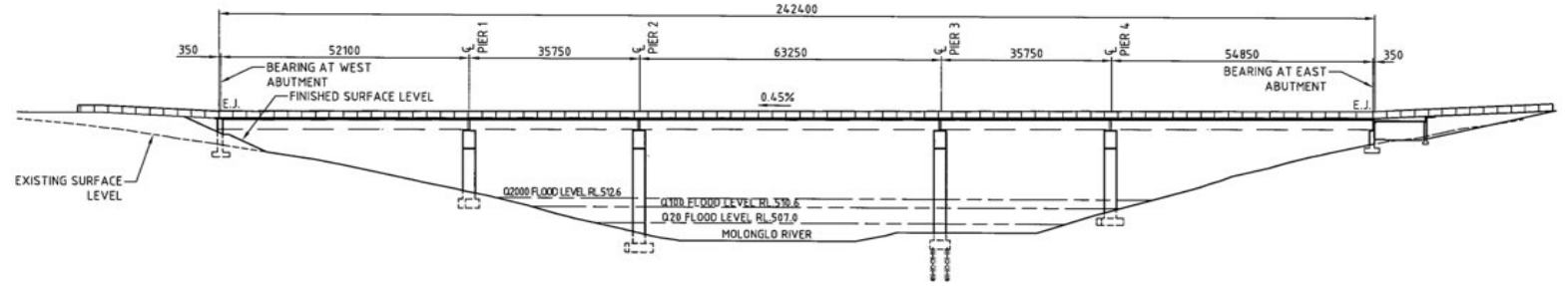


Path longitudinal grade



Bridge pier placement

Family of Bridges Concept



Materials

Weathering steel

Concrete

Slender and low sweeping superstructure

Symmetrical about main span where possible

Transparent and minimal screening

Discreet integrated lighting as required



Civil



Utilities



Drainage



Flood Immunity



Pavement

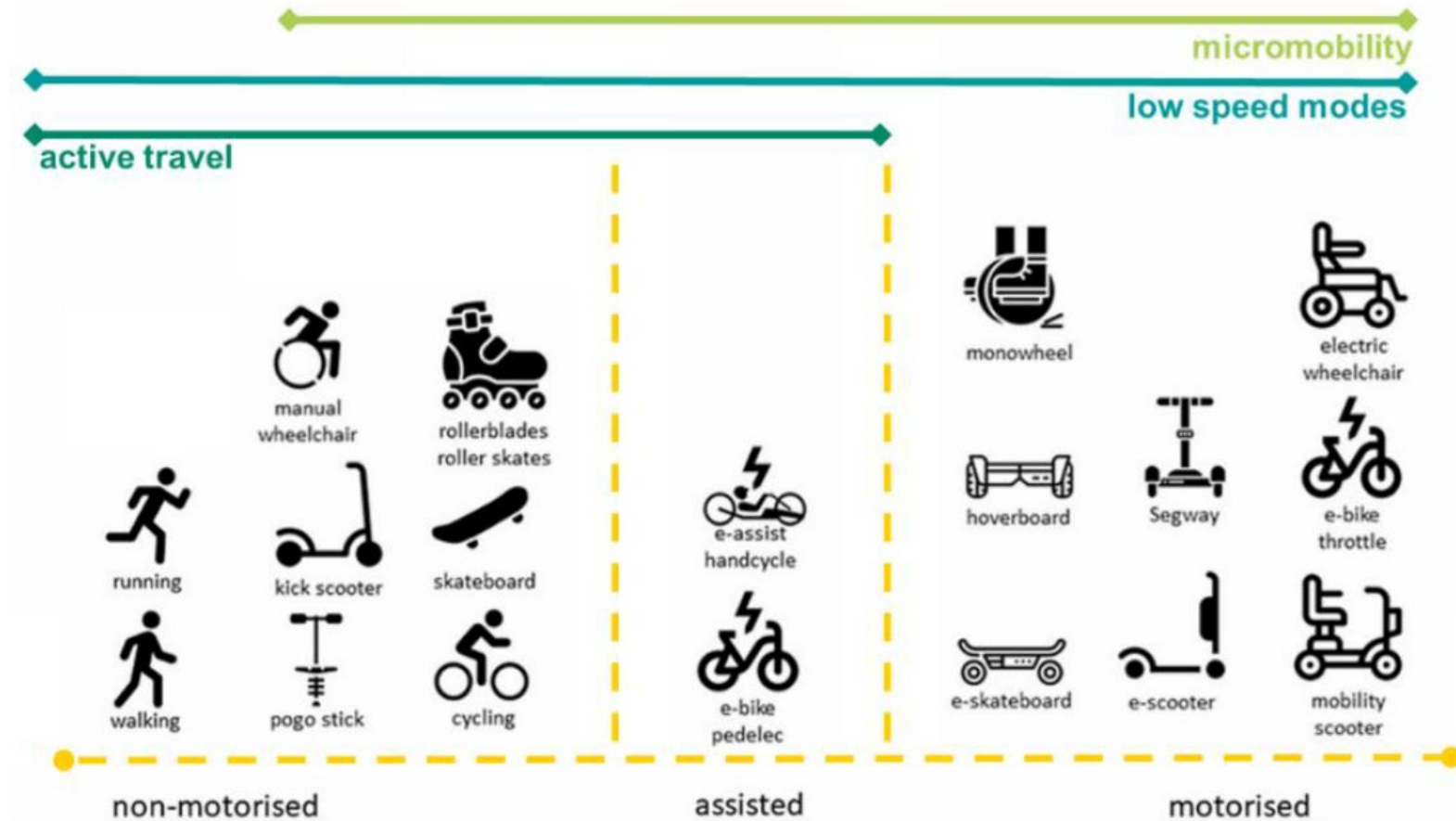


Lighting



Path Connection

Active Travel





How do you project future use of a green field development to the year 2040 and beyond?

Active Transport – vision and validate



Lake Burley Griffin shared path

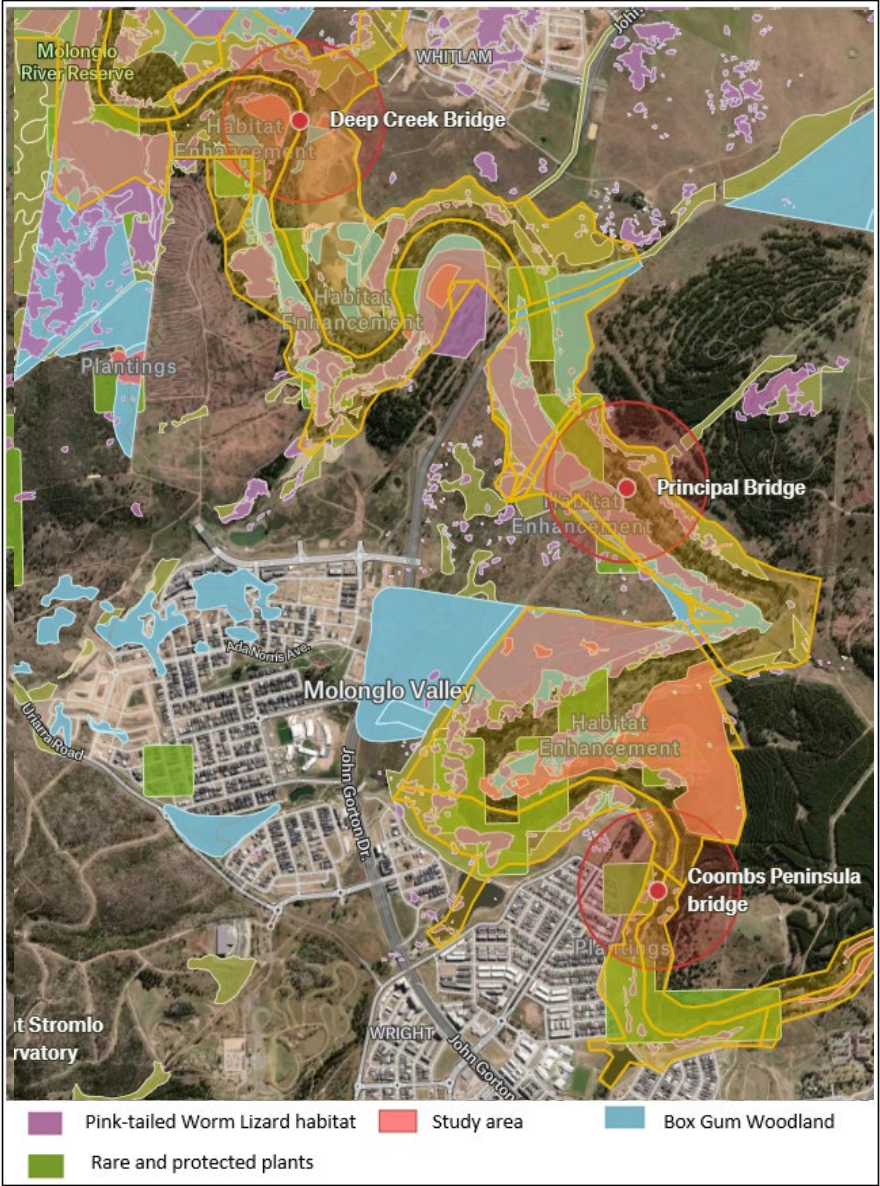


City shared path



Eastlake shared path

Environment – Biodiversity and Heritage



Structures - Considerations and Constraints



- Environmental impacts
- Steep topography and limiting alignment grades



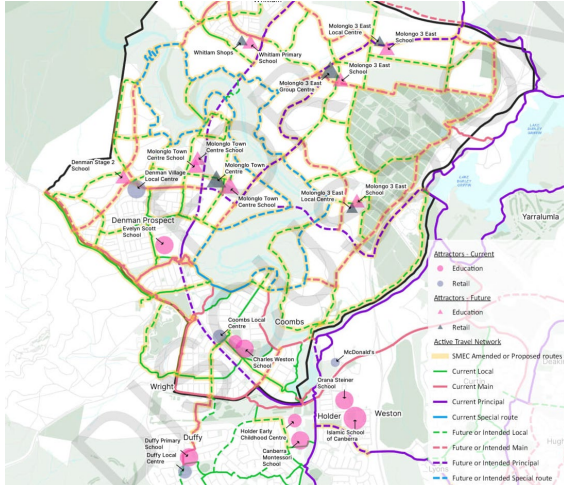
- Construction access
- Minimising spans for structural efficiency
- Bridge aesthetics and user experience



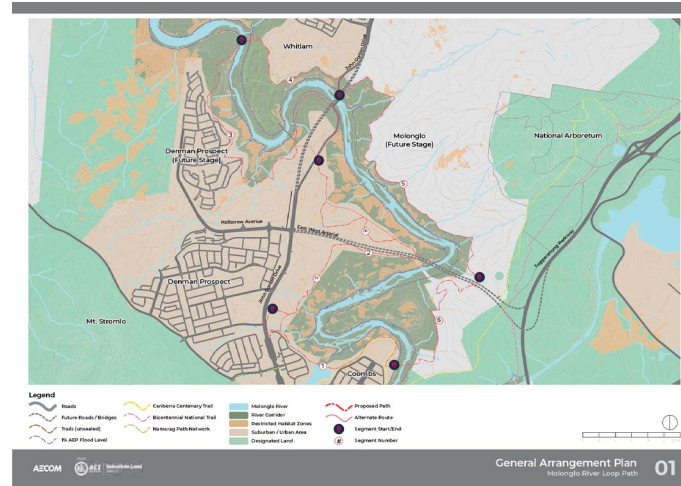
- Cost
- Construction time
- Safety
- Maintenance

Architecture – Inputs

Desktop Assessment:



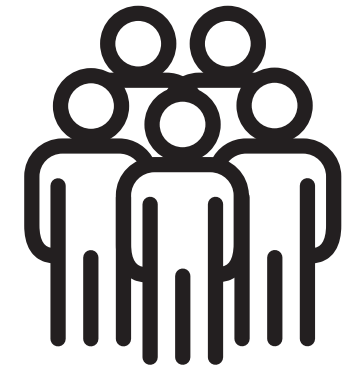
Molonglo Active Travel Master Plan



Molonglo River Loop Path



Standards

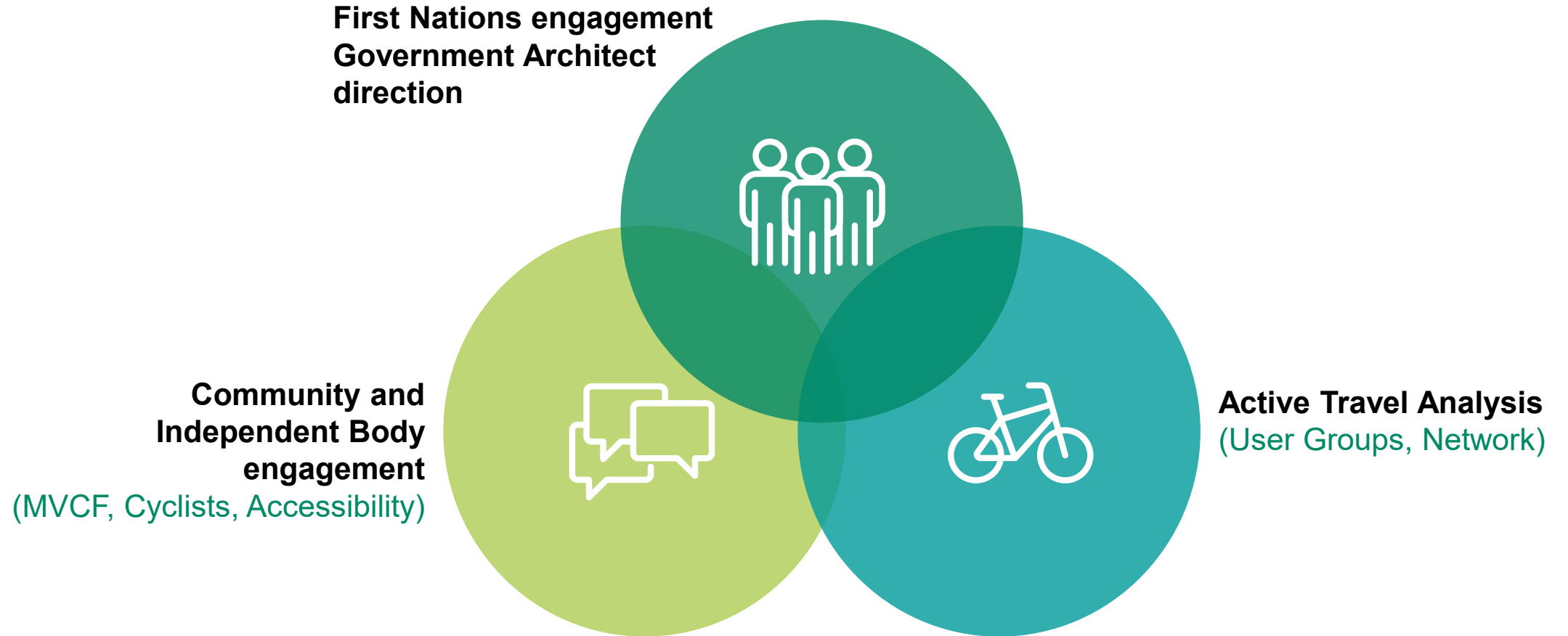


Family of bridges concept

Site Walk Site Analysis Design Analysis



Architecture – further investigation



Architecture – opportunities and challenges

Bridge 1 – Coombs Peninsula

- Southern crossing of MRLP Track
- River approx. 20m wide
- Slopes to river vary from gentle (south) to moderate (north)



Bridge 2 – Principal

- Designated Principal Route in AT Master Plan connecting town centres
- River approx. 80-90m wide
- Slopes to river vary, with steep inclines either side

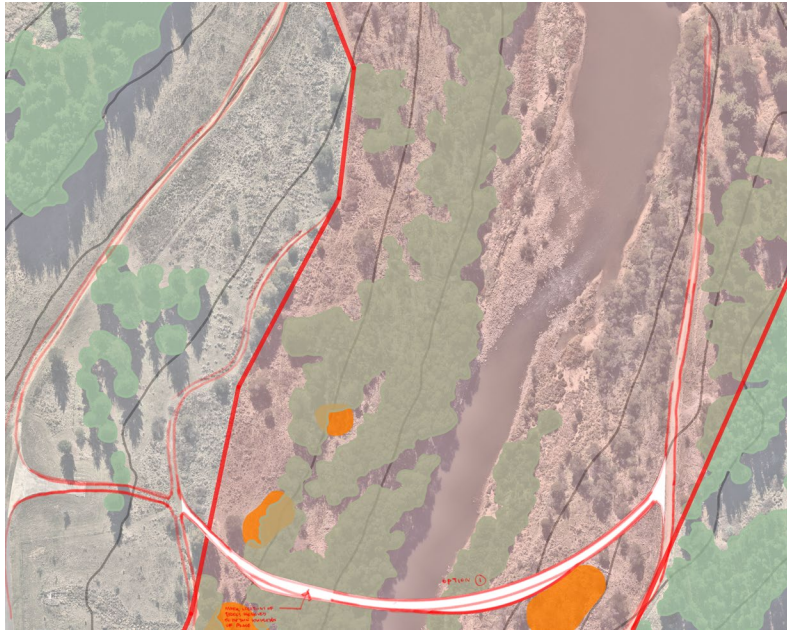


Bridge 3 – Deep Creek

- Northern crossing of MRLP Track
- River approx. 40-50m wide
- Gentle approach on west with moderate climb on the east bank



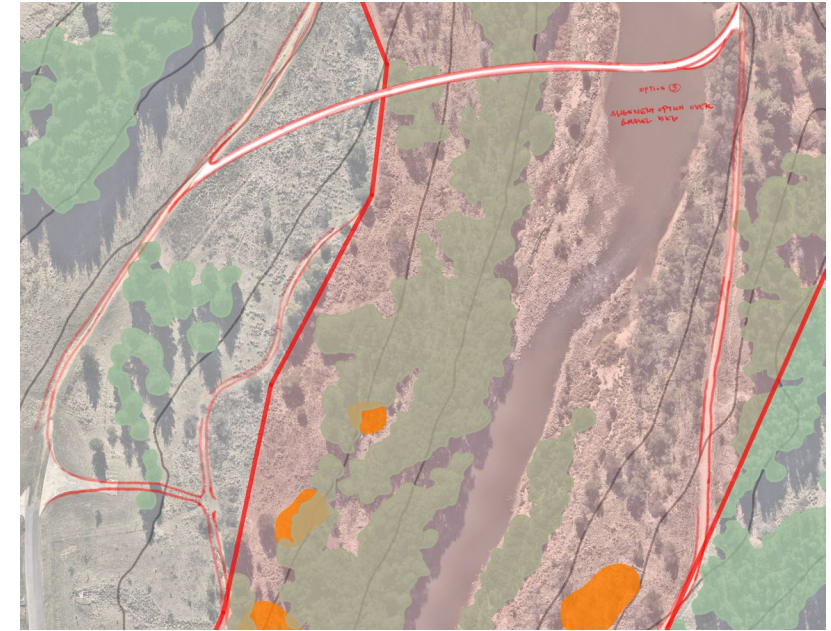
Bridge 1 – Coombs Peninsula



Bridge Alignment Option 1



Bridge Alignment Option 2



Bridge Alignment Option 3



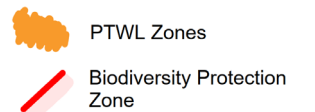
Environment aligned to reduce habitat disturbance



Access gradient softens for southern options



Experience rich immersive environment for southern options



Bridge 1 – Coombs Peninsula

Site

- Vegetated and scenic
- Secluded – valley, inward-looking

Design Narrative and Identity

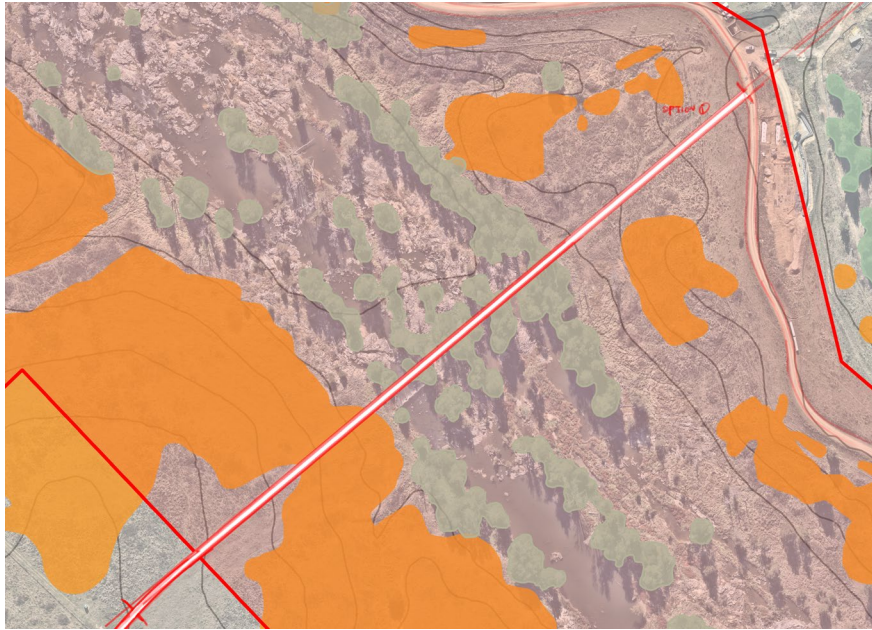
- Calm and serene environment
- Immersed
- Slow movement
- Experience sights and sounds

Architecture

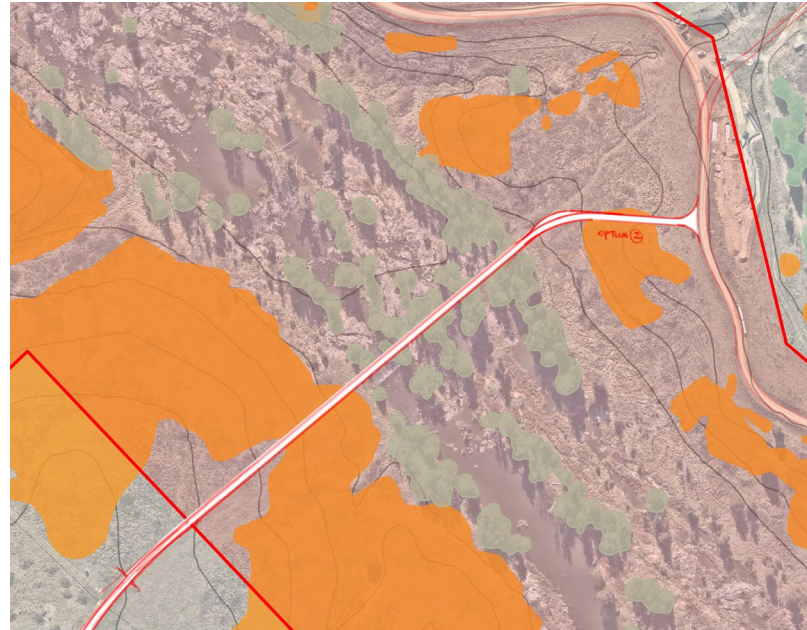
- Permit the experience of the river
- Design to appear light or recede



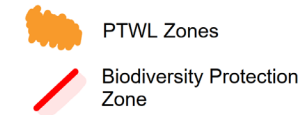
Bridge 2 – Future Group Centre Bridge - Principal



Bridge Alignment Option 1



Bridge Alignment Option 2



Environment options raised over sensitive areas



Access elevation alleviates steep topology



Experience elevated commute and views of river corridor

Bridge 2 - Future Group Centre Bridge - Principal

Site

- Exposed approach with river bank tree lined
- Steep embankment
- Water course is funnelled

Design Narrative and Identity

- Sound of water movement
- Quickly falling terrain
- Fast movement
- Excitement

Architecture

- Long and elevated experience
- Bridge structure above deck





Principal – Impression

Bridge 3 - Deep Creek



Bridge Alignment Option 1

-  PTWL Zones
-  Biodiversity Protection Zone



Environment

north alignment distant from habitat and reserve disturbance



Access

Long approach on east mitigates terrain



Experience

Extend cultural walk from Namarag Reserve

Bridge 3 - Deep Creek

Site

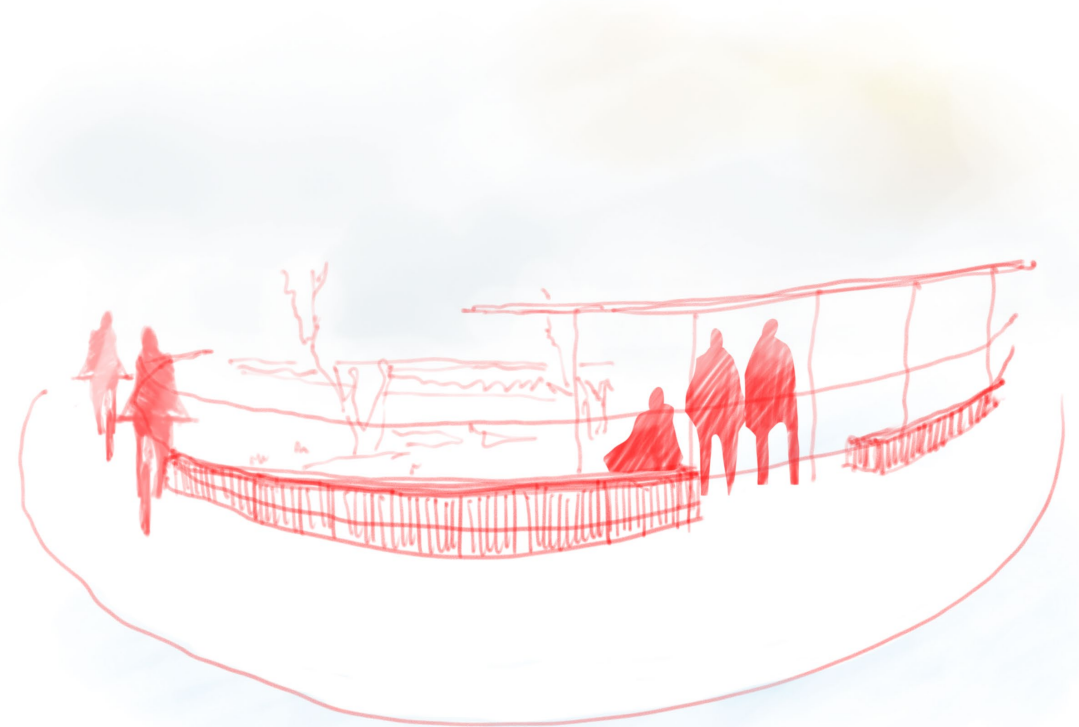
- Exposed, rolling hills with views to the horizon
- Dark tree line at river, contrast to hills
- Softer slopes

Design Narrative and Identity

- Relationship to Namarag Reserve
- Slow movement
- Vulnerability polarised

Architecture

- Offer extension and conversation with reserve
- Bridge structure to recede and permit views



Deep Creek – Impression

Architecture – long term opportunities



Experience and environment

Recommend pursuing designs that exhibit and permit the experience of the Molonglo River.



Identity

Celebrate each unique identity of the bridge locations.



People

Permit transient and slow modes of use.

Architecture – what comes next?



- Meaningful engagement with First Nations to deepen conversations of time and place
- Develop alignments and experience with feedback from stakeholders
- Final Concept Design report with early cost estimates

QUESTIONS & DISCUSSION



Thank you.

We value your input to help us inform the next stages of our design.

Questions?



MOLONGLO VALLEY
Community Forum

THE FUTURE OF THE



MOLONGLO VALLEY
Community Forum

LETTER TO THE CHIEF MINISTER



MOLONGLO VALLEY
Community Forum

Mr Andrew Barr MLA
Chief Minister
ACT Legislative Assembly
GPO Box 1020
Canberra, ACT 2601



MOLONGLO VALLEY
Community Forum

24 August 2023

Dear Chief Minister

The Future of the Molonglo Valley Community Forum

The Molonglo Valley Community Forum (MVCF) is a local district advocacy group and Canberra's eighth community council. Our experience over the past two years leads us to believe that the requirements of the community council deed grant are not conducive to best practice community engagement, and that significant change is required to ensure the residents of Canberra's nine districts are provided with genuine fora for community advocacy and engagement.

To resolve what we believe to be significant and growing inadequacies in the ACT Government's community engagement model, we recommend the following three actions be undertaken as a matter of priority:

1. Establish the **ACT Government Districts Office** with District Directors and stakeholder engagement
2. Establish the **ACT District Planning Advisory Group**
3. Treat the Molonglo Valley as a **district in its own right**.

More detail on these actions is provided below.

KEY ISSUES



MOLONGLO VALLEY
Community Forum

Issue 1: Community Councils as **volunteer-based organisations**

Issue 2: Townhall meetings with **no MLAs or ACT Government representatives**

Issue 3: Community councils as launchpads for **political campaigns**

Issue 4: No **one point of contact** for escalation

BEST PRACTICE



MOLONGLO VALLEY
Community Forum

The ACT Government community engagement model needs to be based on best practice.

Best practice should:

- be based on **social justice principles** of access, equity, participation and rights
- use **multiple methods and channels**
- be detailed in a **comprehensive strategy for each district** of Canberra.

RECOMMENDATIONS

1. Establish the **ACT Government Districts Office** with District Directors and stakeholder engagement
2. Establish the **ACT District Planning Advisory Group**
3. Treat the Molonglo Valley as a **district in its own right**



MOLONGLO VALLEY
Community Forum

Questions?



MOLONGLO VALLEY
Community Forum

STROMLO
FOREST
ANGLICAN
COLLEGE



MOLONGLO VALLEY
Community Forum

Stromlo Forest Anglican College

MVCF Presentation

24 August 2023



Anglican Diocese of
Canberra & Goulburn



Last Time We Met

- Colliers Project Management presented the updated design and internal floor plans.
- We provided an overview of the project staging and opening dates.
- We provided an overview of the community facilities anticipated to be included on the Campus.
- Outlined our sustainability ambitions for the project.

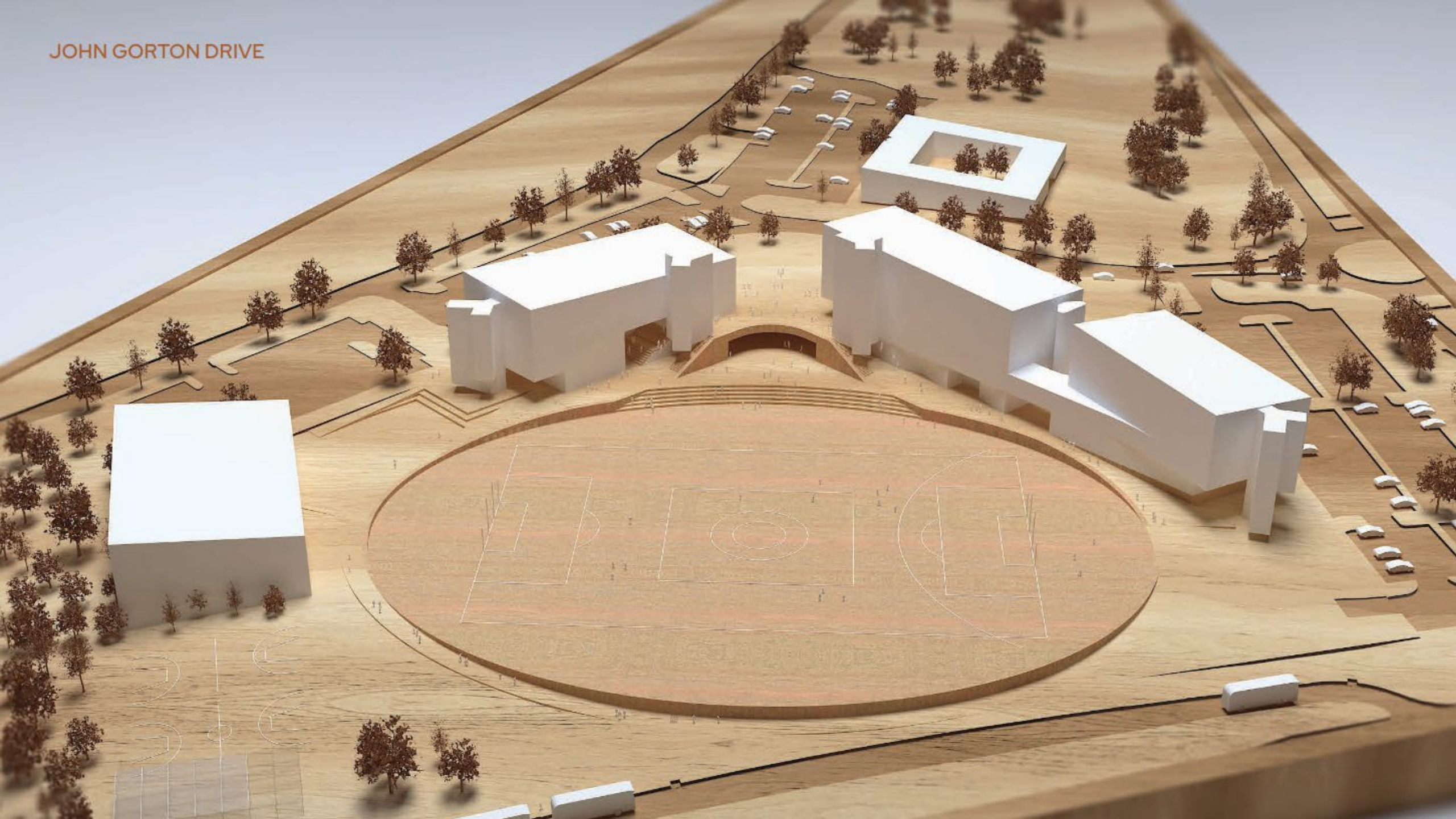


Since Last Time We Met

- Community Engagement has continued with the identified community groups.
- Progressed through design development including the completion of the Final Sketch Plans
- Engagement with ACT Government continues
- Starting to prepare for the submission of the Development Application



JOHN GORTON DRIVE









Artists Impression



Artists Impression



Artists Impression

Stromlo Forest Anglican College

Community Engagement

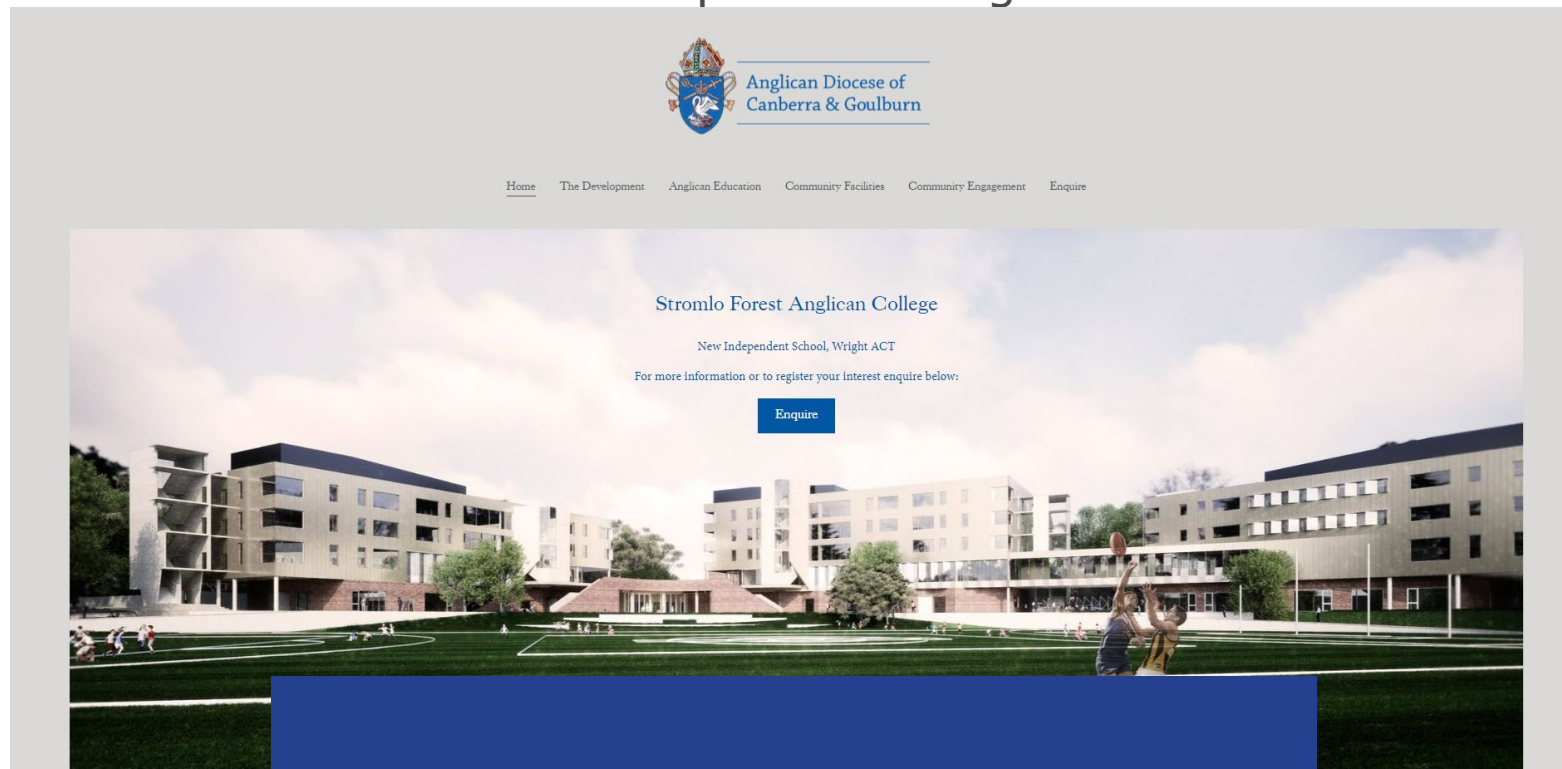
- **Thursday 31st August 2023** at Cooleman Court from 3:00pm to 4:30pm
- **Wednesday 6th September 2023** at Denman Prospect Shops from 3:00pm to 4:30pm
- **Thursday 7th September 2023** from 5:00pm to 6:00pm via Teams. Please email belen.barcenillacoll@colliers.com to register for this session.



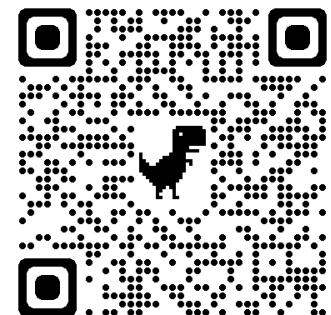
Stromlo Forest Anglican College Website

<https://www.newanglican.school/>

Please raise all enquiries through the website



Screenshot of the Stromlo Forest Anglican School Website



Questions

Artists Impression



Questions?



MOLONGLO VALLEY
Community Forum

Q&A SESSION



MOLONGLO VALLEY
Community Forum

THANK YOU

Next public meeting
21 September 2023



MOLONGLO VALLEY
Community Forum