



MOLONGLO VALLEY
Community Forum

24 | March
2022

**Public
Meeting**

MEETING AGENDA

Community Conversation

Coffee, chat and meet the committee



MOLONGLO VALLEY
Community Forum

Namarag Nature Reserve

Ian Walker, Executive Group Manager, Environment, Heritage and Water -
ACT Conservator Flora and Fauna at Environment Planning and Sustainable
Development Directorate, ACT Government

Update on Coombs Walk in Centre

Rachel Stephen-Smith MLA, Minister for Health

MVCF Update and Q&A

Ryan Hemsley, Convenor, Molonglo Valley Community Forum

Questions and Answers Session

COMMUNITY CONVERSAION



MOLONGLO VALLEY
Community Forum

NAMARAG

NATURE

RESERVE



ACT
Government

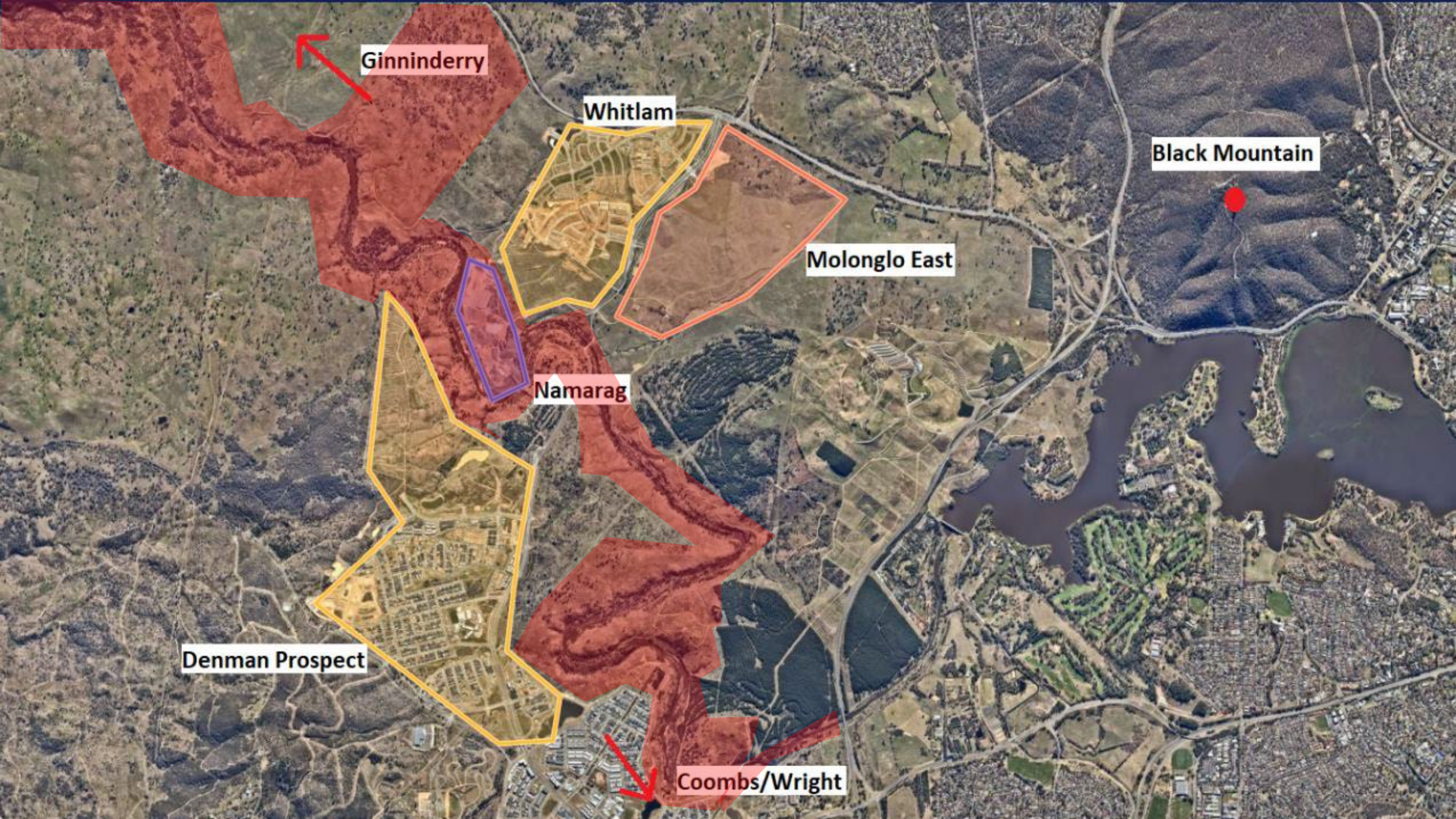


MOLONGLO VALLEY
Community Forum

NAMARAG

Molonglo River Reserve





Ginninderry

Whitlam

Black Mountain

Molonglo East

Namarag

Denman Prospect

Coombs/Wright



Project Snapshots:



Program

Early planning for Molonglo River Reserve: 2012-2018

Namarag concept planning: 2018

Namarag detailed design : 2019-2020

Namarag construction : Sep 2020 to Sept 2021

ACT Government Stakeholders

Parks and Conservation Service - EPSDD

\$10.4m Budget

Business Case Development, Project Management

Major Projects Canberra – Civil IDP

\$350k Revenue

Business case input, Procurement, Contract & Project Management

Suburban Land Agency

\$686k Budget Contribution

Transport Canberra & City Services

Over 98,300m³ fill contribution

Over 2,000 large stumps and 30 'dead' trees contributed



Project Industry Partners

Complex Co Pty Ltd (Civil Contractor) - \$9.6m

WSP Pty Ltd (Civil and Landscape Design) - \$956k

Design - \$430k

Environmental Sampling - \$200k

Superintendency - \$326k

Greening Australia Ltd - \$250k

Zoic Pty Ltd (Environmental Auditor) - \$50k



Other Industry Partners & Subcontractors

ACT Geotech – Geotechnical Engineer

ACT Steel Works Pty Ltd – Steel Structures

CE Construction Pty Ltd - Supply Nation Accredited Materials Supplier

Greening Australia Ltd – Plant Supply, Sowing and Planting

John Skurr Consulting Engineers Pty Ltd – Structural Engineering Consultant

Lynnic Church – Ngunnawal Artist

Millsearch Pty Ltd – UXO Mapping & Clearance Contractor

Oxigen Pty Ltd – Project Landscape Designer

Screenmakers Pty Ltd – Reserve Signage

Tobias Bennet – Construction Phase Sculptor

Territory Agistment Pty Ltd – Rural Fencing

Wellsprings – Construction Phase Landscape Artist and Sculptor



Project Need:

- **Adjacent Developments**
- Contamination
- Area of National Environmental Significance
- Cultural Significance



Namarag - Complimenting Estate Development


- Whitlam DA conditions and the reserve
- Nature Reserve and park infrastructure
- Storm water management
 - Large scale swale
 - Detention basin
- Reuse of materials from adjacent infrastructure projects





Project Need:

- Adjacent Developments
- **Contamination**
- Area of National Environmental Significance
- Cultural Significance



Contaminants of
concern: PFAS, Heavy
Metals, Fecal
Coliforms

Unexploded
Ordinance



Implementation of Remedial Action Plan:

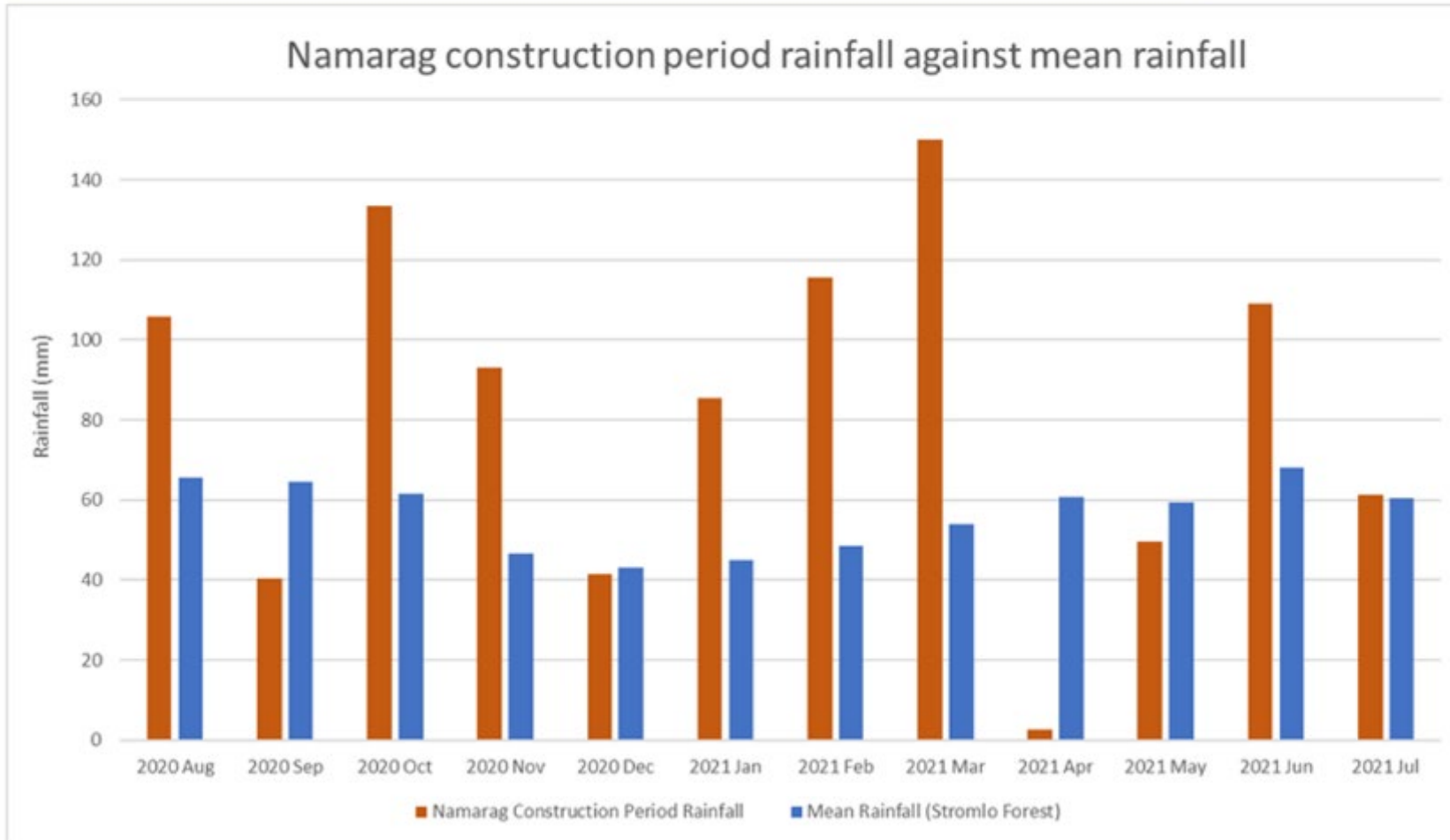
- Extensive soil, ground and surface water sampling
- Development of a remedial plan
 - Containment and capping approach
 - Minimal offsite disposal
- Auditor and EPA endorsement
- Construction
- Post construction testing and validation
- Implementation of a long-term management plan

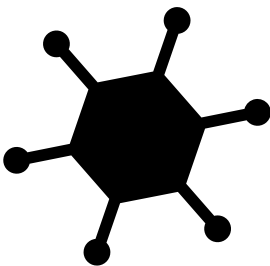
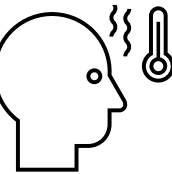
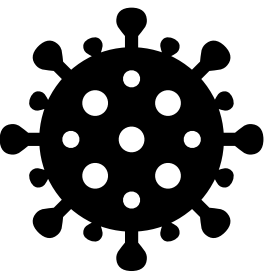
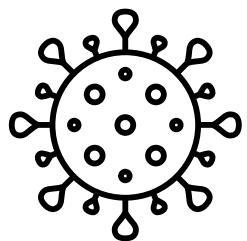
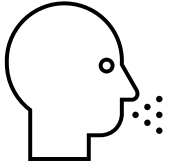
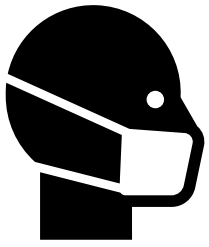


Challenges



Mean Annual Rainfall (Stromlo Forest Station, Data to 1968)	671mm
Mean Annual Rainfall (Tuggeranong Station, Data to 1996)	621mm
Namarag Total Construction Period Rainfall (Aug 2020 to July 2021)	988mm







Project Need:

- Adjacent Developments
- Contamination
- **Area of National Environmental Significance**
- Cultural Significance



Habitat Restoration

- Native Box Gum Woodland Restoration
- Pink-tailed Worm-lizard Habitat Restoration
- Largest Native Grassland Restoration Project in The ACT



Restoration, Habitat &
Natural Public Art



Project Need:

- Adjacent Developments
- Contamination
- Area of National Environmental Significance
- **Cultural Significance**



Cultural Significance

- Significant community liaison including indigenous community groups
- Significant Indigenous industry involvement throughout the planning, design and construction
- Over 1.5% Aboriginal & Torres Strait Islander identified organisation involvement through the construction phase
- Indigenous art and themes replicated throughout the landscape design including:
 - Reserve Name 'Namarag' (Wattle)
 - Premier Events 'Terrace'
 - Bush Tucker Gardens
 - Timber and Rock Art
 - Nature Play precincts
 - Aerial landscape art, Bogong Moth, Platypus, Wattle Leaves
 - Native vegetation used throughout





Bugang Events Terrace



Bushtucker terraces



Nature play



Questions

Q&A SESSION



ACT
Government



MOLONGLO VALLEY
Community Forum

COOMBS WALK IN CENTRE



ACT
Government



MOLONGLO VALLEY
Community Forum



ACT
Government

**Canberra Health
Services**

New health facility at Coombs

Molonglo Valley Community Forum
Thursday, 24 March 2022

Rachel Stephen-Smith MLA, Minister for Health

Cathie O'Neill, COO, Canberra Health Services





Health services provided right here in the community

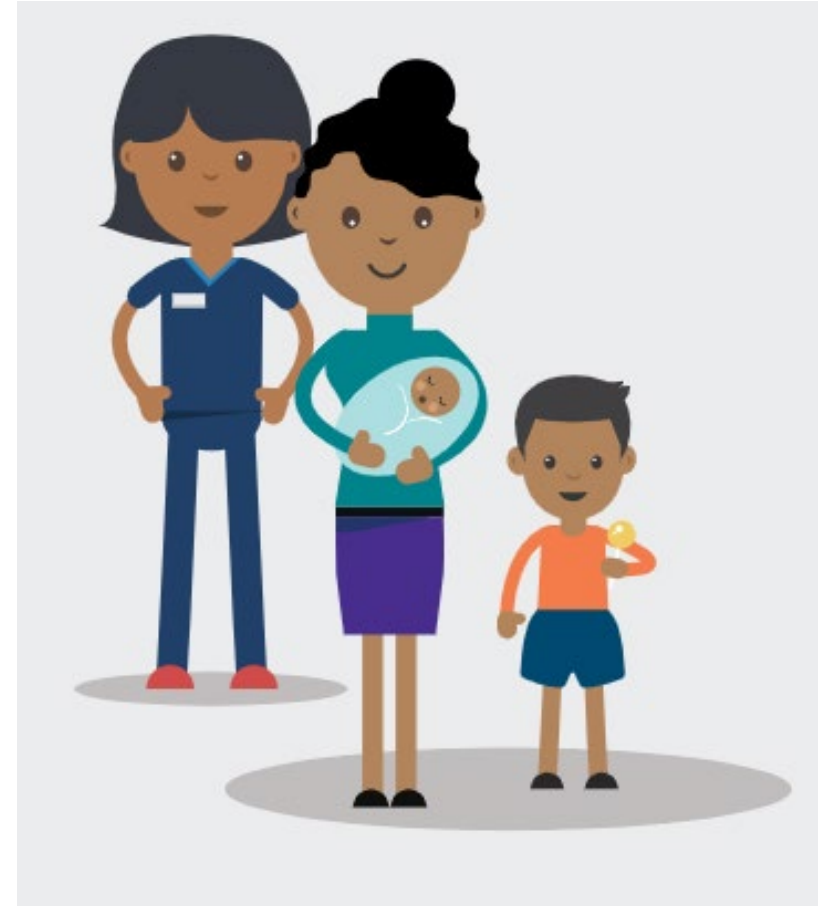
Located within the
Molonglo Valley Medical Centre
100 Woodberry Avenue, Coombs

Focusing on women's, children, and family health services

Commencing from late April

- Antenatal services
- Women's Health Counselling services
- Children's asthma services

Future expansion of services



New community-based health facilities

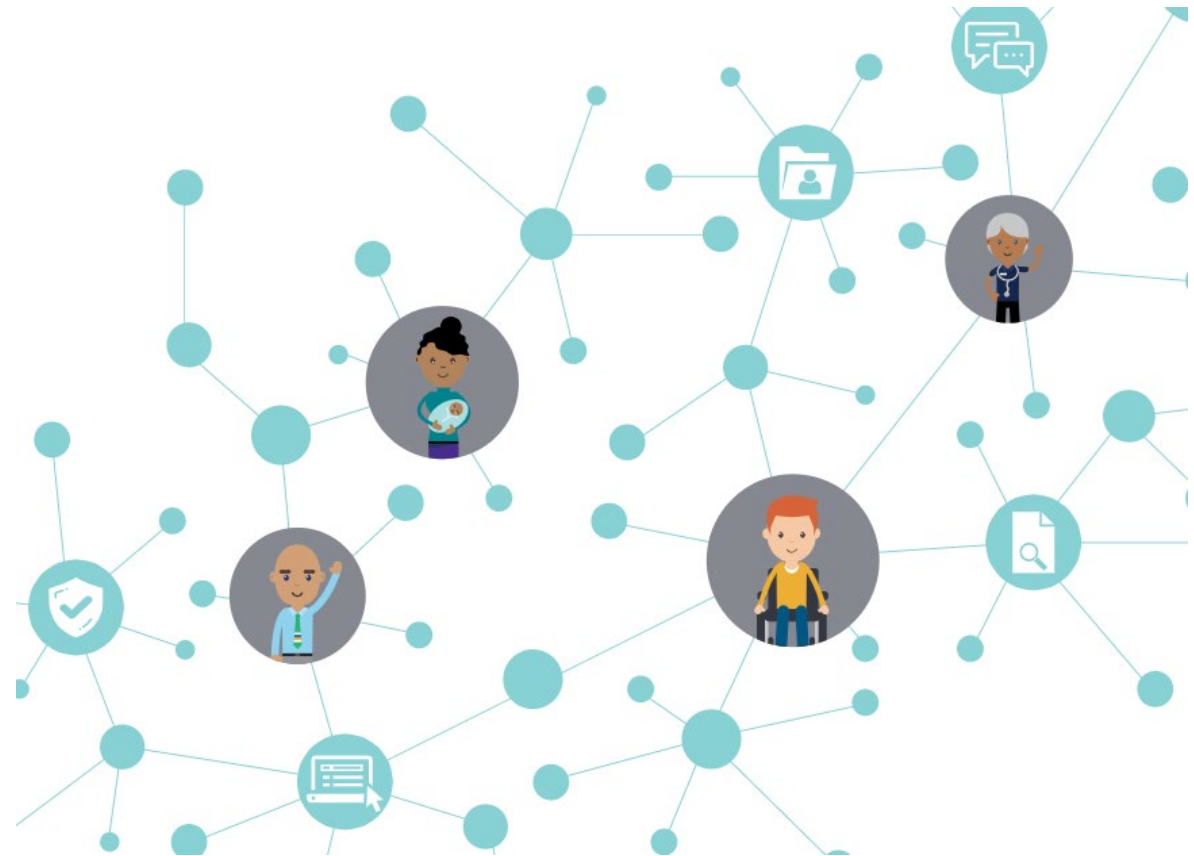
Coombs is the first of five new types of health facilities to be established across the Territory

Additional health facilities providing services right in the community



Integrated Care Program

Creating relationships and infrastructure to drive seamless provision of the right care, at the right time, at the right place by the most appropriate provider in partnership with the consumer and their care supports.



Working definition

Opportunities to contribute...

Engagement activities
from May 2022

Seeking advice on what
services are needed in
the community and how
these can be integrated
and easy to access



Thank you



ACT
Government

**Canberra Health
Services**

Q&A SESSION



ACT
Government



MOLONGLO VALLEY
Community Forum

MVCF UPDATE LATEST NEWS



MOLONGLO VALLEY
Community Forum



MOLONGLO VALLEY
Community Forum

Inaugural Event



MOLONGLO VALLEY
Community Forum

Molonglo Valley Multicultural Day

27 March 2022
2-5pm

Stromlo Forest Park

Supported by our partners



ACT
Government

Suburban Land
Agency

Molonglo Group Centre



MOLONGLO VALLEY
Community Forum



ACT
Government
Environment, Planning and
Sustainable Development

Planning and Development Act 2007

Technical Amendment to the Territory Plan

2022-1

Molonglo Group Centre
and surrounds

March 2022

Technical amendment for public consultation prepared
under s87 of the Planning and Development Act 2007

Technical Amendment to the Territory Plan set for imminent release

Will be available at:

planning.act.gov.au/planning-our-city/territory_plan/current_technical_amendments

New Flood Warning Signs



MOLONGLO VALLEY
Community Forum



Q&A SESSION



MOLONGLO VALLEY
Community Forum

THANK YOU

Next public meeting
28 April 2022



MOLONGLO VALLEY
Community Forum